



**MARTIN LOGAN**

Catalogo 2019

# Motion 15

## SPECIFICATIONS

### Frequency Response

60–25,000 Hz ± 3 dB

### Dispersion

80° x 80°

### High Frequency Driver

1" x 1.4" (2.6cm x 3.6cm) Folded Motion Transducer with 5.25" x 1.75" (13.3cm x 4.4cm) diaphragm.

### Low Frequency Transducer

5.25" (13.3cm) aluminum cone with cast basket. Non-resonant asymmetrical chamber format. Rigid structured dust cap to reduce cone break-up modes.

### Sensitivity

92 dB @ 2.83 volts/meter

### Impedance

5 Ohms. Compatible with 4, 6 or 8 Ohm rated amplifiers.

### Recommended Amplifier Power

20–200 watts

### Crossover Frequency

2,700 Hz

### Cabinet

Ported

### Components

Custom air core coil and low DCR steel laminate inductors. Polypropylene film capacitors in series and low DF electrolytic capacitors in parallel. Overall system thermal/current protection.

### Inputs

Custom 5-way binding posts

### Weight

12 lbs. (5.4 kg)

### Dimensions

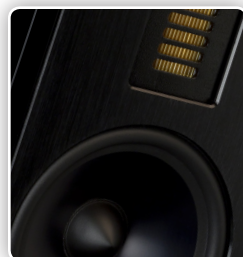
11.4" x 6.8" x 9.5"  
(29cm x 17.3cm x 24.2cm)

*Specifications are subject to change without notice.*



*Motion 15 extends the award-winning Motion® Series sound to a more traditional bookshelf package, with luxurious high-gloss wood finishes and matching aesthetics to the rest of the Motion floorstanding lineup.*

The High-Performance Motion 15 bookshelf features an advanced resolution Folded Motion™ tweeter, a low-distortion 5.25-inch high-excursion black-aluminum woofer, and low-turbulence rear-firing bass port for extended bass performance, all in a traditional bookshelf package.



MartinLogan's signature perforated steel grille attaches magnetically to the solidly constructed 3/4-inch thick MDF cabinets on the Motion 15. Hidden discretely underneath the grille, the drivers are held securely in place by a solid, black-anodized brushed aluminum baffle. Folded Motion tweeters and woofers are seamlessly blended with an advanced topology crossover network featuring polypropylene and low-DF electrolytic capacitors, custom wound inductors, and thermal and current protection. The Motion 15 also features recessed custom 5-way binding posts for connection versatility.

# Motion 35XT

## SPECIFICATIONS

### Frequency Response

50–25,000 Hz ± 3 dB

### Dispersion

80° x 30°

### High Frequency Driver

1.25" x 2.4" (3.2cm x 6.1cm)

Folded Motion XT Transducer with 4.5" x 2.75" (11.4cm x 7cm) diaphragm.

### Low Frequency Transducer

6.5" (16.5cm) aluminum cone with cast polymer basket. Non-resonant asymmetrical chamber format. Rigid structured dust cap to reduce cone break-up modes.

### Sensitivity

92 dB @ 2.83 volts/meter

### Impedance

4 Ohms. Compatible with 4, 6 or 8 Ohm rated amplifiers.

### Recommended Amplifier Power

20–250 watts

### Crossover Frequency

2,200 Hz

### Cabinet

Ported

### Components

Custom air core coil and low DCR steel laminate inductors. Polypropylene film capacitors in series and low DF electrolytic capacitors in parallel. Tweeter thermal/current protection.

### Inputs

Custom 5-way bi-wire tool-less binding posts

### Weight

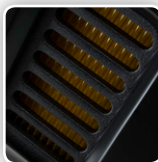
18.5 lbs. (8.4 kg)

### Dimensions

13.5" x 7.6" x 11.8"

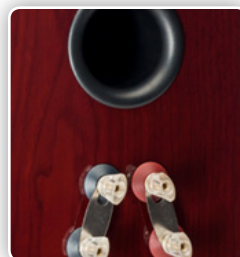
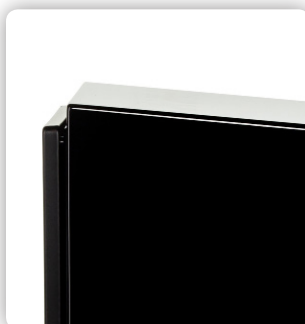
(34.3cm x 19.2cm x 30cm)

*Specifications are subject to change without notice.*



*Motion 35XT is our largest bookshelf with extreme performance capabilities, featuring luxurious high-gloss wood finishes and matching aesthetics to the rest of the Motion Series lineup.*

XT stands for *extreme*, and for good reason. The Motion 35XT bookshelf plays louder, lower, and with unflinching accuracy. Our most accurate Folded Motion™ XT tweeter paired with a low-distortion 6.5-inch high-excursion black-aluminum woofer and low-turbulence rear-firing bass port creates audible acoustic alchemy.



MartinLogan's signature perforated steel grille attaches magnetically to the solidly constructed 3/4-inch thick MDF cabinets on the Motion 35XT. Hidden discretely underneath the grille, the drivers are held securely in place by a solid, black-anodized brushed aluminum baffle. Folded Motion XT tweeters and woofers are seamlessly blended with an advanced topology crossover network featuring polypropylene and low-DF electrolytic capacitors, custom wound inductors, and thermal and current protection. The Motion 35XT also features dual custom 5-way tool-less binding posts for connection versatility.

# Motion 20

## SPECIFICATIONS

**Frequency Response**  
46–25,000 Hz ± 3 dB

**Dispersion**  
80° x 80°

**High Frequency Driver**  
1" x 1.4" (2.6cm x 3.6cm) Folded Motion Transducer with 5.25" x 1.75" (13.3cm x 4.4cm) diaphragm.

**Low Frequency Transducer**  
Two 5-1/2" (14cm) aluminum cone woofers in a non-resonant asymmetrical chamber format. Cast polymer basket. Rigid structured dust caps reduce cone break-up

**Sensitivity**  
90 dB @ 2.83 volts/meter

**Impedance**  
4 Ohms. Compatible with 4, 6, or 8 Ohm rated amplifiers.

**Recommended Amplifier Power**  
20 – 200 watts

**Crossover Frequency**  
500 & 2,600 Hz

**Cabinet**  
Ported

**Components**  
Precision Vojtko™ with custom air core coil and low DCR steel laminate inductors. Polyester film capacitors in series and low DF electrolytic capacitors in parallel

**Inputs**  
Custom 5-way bi-wire toolless binding posts

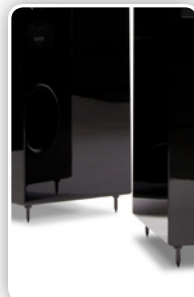
**Weight**  
37 lbs. (16.8 kg)

**Dimensions**  
36.6" x 6.8" x 11.7"  
(92.9cm x 17.3cm x 29.7cm)

*Specifications are subject to change without notice.*



The Motion 20 speaker features our advanced resolution Folded Motion™ tweeter and dual 5-1/2" aluminum cone bass woofers. Each cabinet is wrapped in a luscious high-gloss paint.



### Expansive Sound & Sophisticated Aesthetics

The Motion 20 is a breathtaking visual statement regardless of its compact dimensions. Dual 5-1/2" aluminum-cone woofers are paired with a rear-firing bass port for extra punch in the low frequencies. With the addition of our exquisite Folded Motion™ tweeter it's a design that delivers solid low-frequency reinforcement, superb sound dispersion and precise, highly dynamic high frequencies. Sitting on top included MiniETC™ Spikes, this combination creates audible acoustic alchemy across the frequency spectrum and offers an extremely expansive soundstage, richly detailed highs, and an open & revealing midrange.

# Motion 40

## SPECIFICATIONS

### Frequency Response

40–25,000 Hz ± 3 dB

### Dispersion

80° x 80°

### High Frequency Driver

1" x 1.4" (2.6cm x 3.6cm) Folded Motion Transducer with 5.25" x 1.75" (13.3cm x 4.4cm) diaphragm.

### Mid Frequency Transducer

5-1/2" (14cm) aluminum cone woofer in a non-resonant asymmetrical chamber format. Cast polymer basket. Rigid structured dust cap reduces cone break-up

### Low Frequency Transducer

Two 6-1/2" (16.5cm) aluminum cone woofers in a non-resonant asymmetrical chamber format. Cast polymer basket. Rigid structured dust caps reduce cone break-up

### Sensitivity

92 dB @ 2.83 volts/meter

### Impedance

4 Ohms. Compatible with 4, 6, or 8 Ohm rated amplifiers.

### Recommended Amplifier Power

20 – 300 watts

### Crossover Frequency

500 & 2,600 Hz

### Cabinet

Ported

### Components

Precision Vojtko™ with custom air core coil and low DCR steel laminate inductors. Polyester film capacitors in series and low DF electrolytic capacitors in parallel

### Inputs

Custom 5-way bi-wire tool-less binding posts

### Weight

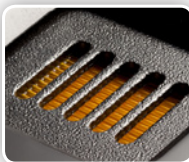
49 lbs. (22.2 kg)

### Dimensions

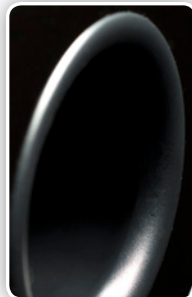
42.5" x 7.6" x 12.8"

(107.9cm x 19.2cm x 32.6cm)

*Specifications are subject to change without notice.*



The elegant Motion 40 speaker features our advanced resolution Folded Motion™ tweeter, a 5-1/2" aluminum cone midrange and two 6-1/2" aluminum cone bass woofers.



### Audiophile Performance without the Audiophile Price

Part of the secret to the Motion 40's outstanding performance lies in the dual oversized aluminum-cone woofers paired with a rear-firing bass port. The oversized woofer design creates increased cone area delivering higher output and audibly richer, deeper bass performance than it's slightly smaller sibling, the Motion 20. The addition of a dedicated mid woofer also promotes an even more open, revealing and authentic midrange. Pairing this powerful trio with our patented Folded Motion tweeter creates audible acoustic alchemy across the frequency spectrum and offers an expansive soundstage, richly detailed highs, and an open & revealing midrange.

# Motion 60XT

## SPECIFICATIONS

### Frequency Response

35–25,000 Hz ± 3 dB

### Dispersion

80° x 30°

### High Frequency Driver

1.25" x 2.4" (3.2cm x 6.1cm)

Folded Motion XT Transducer with 4.5" x 2.75" (11.4cm x 7cm) diaphragm.

### Mid Frequency Transducer

6-1/2" (16.5cm) aluminum cone with cast polymer basket. Sealed chamber format. Rigid structured dust cap to reduce cone break-up modes.

### Low Frequency Transducer

Two 8" (20.3cm) aluminum cone with cast aluminum basket. Non-resonant asymmetrical chamber format. Rigid structured dust cap to reduce cone break-up modes.

### Sensitivity

94 dB @ 2.83 volts/meter

### Impedance

4 Ohms. Compatible with 4, 6, or 8 Ohm rated amplifiers.

### Recommended Amplifier Power

20 – 400 watts

### Crossover Frequency

400 & 2,200 Hz

### Cabinet

Ported

### Components

Custom air core coil and low DCR steel laminate inductors. Polypropylene film capacitors in series and low DF electrolytic capacitors in parallel. Tweeter thermal/current protection.

### Inputs

Custom 5-way bi-wire tool-less binding posts

### Weight

66 lbs. (30 kg)

### Dimensions

48" x 11.4" x 14.4"  
(121.8cm x 29cm x 36.6cm)

Specifications are subject to change without notice.



The dominant Motion 60XT speaker features our largest and most accurate Folded Motion™ XT tweeter, a 6-1/2" aluminum cone midrange and two 8" high-performance aluminum cone bass woofers.



### Audiophile Dominance with Style

XT stands for *extreme*, and for good reason. Motion 60XT speakers play louder, lower, and with unflinching accuracy. Dual 8" woofers and rear-firing bass ports create astonishing deep, precise bass, while a dedicated mid woofer promotes an open, revealing and authentic midrange. Paring this powerful trio with our most accurate Folded Motion XT tweeter creates audible acoustic alchemy that delivers an engaging and encompassing experience, cutting straight to the emotion locked inside your favorite recordings.

# Motion 30

## SPECIFICATIONS

### Frequency Response

65–25 000 Hz  $\pm$  3 dB

### Dispersion

80° x 80°

### High Frequency Driver

1" x 1.4" (2.6cm x 3.6cm) Folded Motion Transducer with 5.25" x 1.75" (13.3cm x 4.4cm) diaphragm

### Low Frequency Transducer

Two 5.5" (14cm) aluminum cone with cast polymer basket. Non-resonant asymmetrical chamber format. Rigid structured dust cap to reduce cone break-up modes.

### Sensitivity

91 dB/2.83 volts/meter

### Impedance

4 Ohms. Compatible with 4, 6 or 8 Ohm rated amplifiers.

### Recommended Amplifier Power

20 – 200 watts

### Crossover Frequency

400 & 2,600 Hz

### Cabinet

Rear Ported

### Components

Custom air core coil and low DCR steel laminate inductors. Polyester film capacitors in series and low DF electrolytic capacitors in parallel. Overall system thermal/current protection.

### Inputs

Custom 5-way tool-less binding posts

### Weight

18 lbs. (8.2 kg)

### Dimensions

6.9" x 16.5" x 10.5"  
(17.5cm x 42cm x 26.6cm)

Specifications are subject to change without notice.



Powerful compact center channel speaker with a Folded Motion™ tweeter, high-gloss piano-black finish subtle angled top. Voice-matched to MartinLogan ESL speakers.



Inspired by the clarity and detail of our ultra-high-end electrostatic loudspeakers, Motion 30 features an exquisite Folded Motion tweeter and powerful bass technology in a compact and affordable package. Key to Motion 30's performance is the lightning fast response of the tweeter's light-weight diaphragm combined with a large surface area (8-times that of a typical one-inch dome tweeter) which together achieve a smooth, refined sound with stunning dynamic range and jaw-dropping clarity.

# Motion 50XT

## SPECIFICATIONS

### Frequency Response

50–25 000 Hz ± 3 dB

### Dispersion

80° x 30°

### High Frequency Driver

1.25" x 2.4" (3.2cm x 6.1cm)

Folded Motion XT Transducer with 4.5" x 2.75" (11.4cm x 7cm) diaphragm.

### Low Frequency Transducer

Two 6.5" (16.5cm) aluminum cone with cast polymer basket. Non-resonant asymmetrical chamber format. Rigid structured dust cap to reduce cone break-up modes.

### Sensitivity

94 dB/2.83 volts/meter

### Impedance

4 Ohms. Compatible with 4, 6 or 8 Ohm rated amplifiers.

### Recommended Amplifier Power

20 – 300 watts

### Crossover Frequency

900 & 2,200 Hz

### Cabinet

Rear Ported

### Components

Custom air core coil and low DCR steel laminate inductors. Polypropylene film capacitors in series and low DF electrolytic capacitors in parallel. Tweeter thermal/current protection.

### Inputs

Custom 5-way bi-wire tool-less binding posts

### Weight

30.5 lbs. (13.8 kg)

### Dimensions

7.6" x 22.8" x 12.8"  
(19.2cm x 58cm x 32.6cm)

Specifications are subject to change without notice.



Powerful center channel speaker features our largest and most accurate Folded Motion™ XT tweeter and larger woofers an extreme performance.

XT stands for *extreme*, and for good reason. The Motion 50XT center channel plays louder, lower, and with unflinching accuracy. Inspired by the clarity and detail of our ultra-high-end electrostatic loudspeakers, Motion 50XT features an exquisite Folded Motion XT tweeter and powerful bass technology in a high-performance center channel package that creates refined sound with stunning dynamic range and jaw-dropping clarity.







**Application:**

Home theater wide dispersion surround ideal for large, medium, and small rooms.

Inspired by MartinLogan's ultra-high-end electrostatic loudspeakers, the Motion Series was created by our dedicated in-house engineering team to provide stunningly compelling sound for your ultimate-performance audio system.

**Key Features:**

- Dual Folded Motion™ tweeters
- Wide dispersion
- 5.25-inch paper cone woofer doped for stability and damping. Rigid dust cap.
- Folded bass reflex port
- Precision Vojtko™ crossover with custom air core coil and low DCR steel laminate inductors; polyester film and low DF electrolytic capacitors
- On-wall installation in corner, flat on wall, or angled on wall
- Bookshelf installation
- Convenient push-style binding posts easily adapt to accept banana plugs.



**MOTION SERIES**

**AUDIOPHILE PERFORMANCE WITHOUT AN AUDIOPHILE PRICE**

Inspired by our ultra-high-end electrostatic loudspeakers, Motion FX features dual Folded Motion tweeters in a wide dispersion configuration, powerful bass, and folded reflex port technology in a compact, affordable package. Key to Motion FX's performance is the lightning fast response of the tweeter's light-weight diaphragm combined with a large surface area (8-times that of a typical one-inch dome tweeter) which together achieve a smooth, refined sound with stunning dynamic range and jaw-dropping clarity.

<i>Frequency Response</i>	74–25,000 Hz ± 3dB
<i>Sensitivity</i>	91 dB/2.83 volts/meter
<i>Impedance</i>	4 Ohms. Compatible with 4, 6, or 8 Ohm rated amplifiers.
<i>Crossover Frequency</i>	4500 Hz
<i>High Frequency Driver</i>	Two 1 x 1.4" (2.6 x 3.6 cm) Folded Motion Transducer with 5.25 x 1.75" (13.3 x 4.4 cm) diaphragm.
<i>Mid/Low Freq. Drivers</i>	5.25" (13.3 cm) paper cone. Folded Bass Reflex Port
<i>Recommended Amp</i>	20–160 watts
<i>Weight</i>	9.5 lbs. (4.4 kg)
<i>Size (HxWxD)</i>	11.1 x 12 x 6" (28.2 x 30.5 x 15.2 cm)



The superb Folded Motion tweeter.

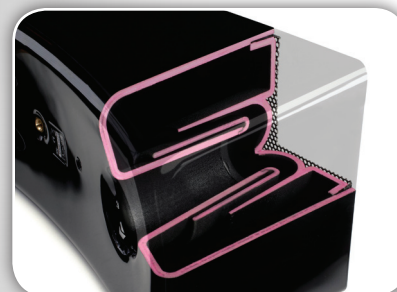


The Great American Speaker Company  
www.martinlogan.com



Convenient push-style binding posts also accept banana plugs (Motion 4 shown here).

**FINISH OPTIONS**



Folded bass reflex port shown here in pink (Motion 4 shown here).

# Motion AFX

## Height Ceiling Speaker

### SPECIFICATIONS

**Frequency Response**

90–20,000 Hz ± 3 dB

**Sensitivity**

87 dB @ 2.83 volts/meter

**Impedance**

4 Ohms. Compatible with 4, 6 or 8 Ohm rated amplifiers.

**Crossover Frequency**

2,000 Hz

**High Frequency Driver**

0.75" (1.9cm) aluminum dome

**Low Frequency Drivers**

5.25" (13.4cm) polypropylene cone with stamped steel basket.

**Cabinet**

Sealed

**Components**

Custom air core and low dcr steel laminate inductors. Polyester film capacitors in series and low DF electrolytic caps in parallel.

**Recommended Amplifier Power**

20–200 watts

**Binding Post Inputs**

Custom 5-way tool-less binding posts

**Weight**

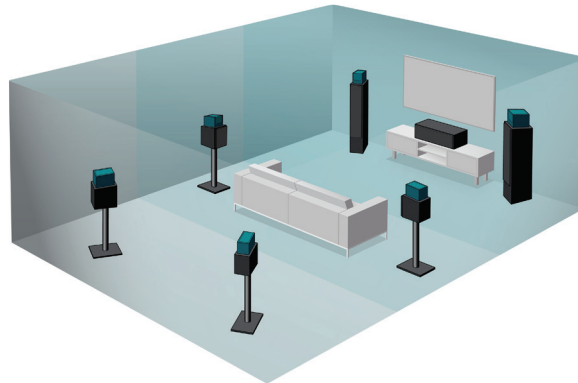
8 lbs. (3.6 kg)

**Dimensions**

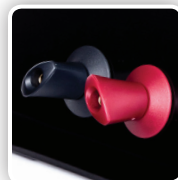
7.7" x 6.8" x 10"

(19.5cm x 17.3cm x 25.4cm)

Specifications are subject to change without notice.



**Dolby Atmos®. What is it?** Listen to sound come alive from all directions with Dolby Atmos®. The science behind this incredible 3D aural experience lies in a channel-based audio that moves specific sound effects around the room creating a 3D aural effect. The result is an incredibly realistic sonic atmosphere that immerses you in the experience so you virtually become part of the scene. Movies, music, television shows or playing video games, Dolby Atmos delivers the full entertainment experience. Sound technicians can mix in a 3D space creating a seamless overhead dimension. Home audio systems automatically scale to whatever your existing surround configuration.

**Speaker Setup:**

With the Motion AFX, there's no need to make any complicated, overhead installations. Simply place the Motion AFX in pairs (2, 4, or 6) on top of existing speakers and wire to any receiver that's Dolby Atmos enable. Even movies not mixed for Dolby Atmos will be expanded to fill the flexible speaker layouts of a Dolby Atmos system.





## ELECTROMOTION ESL™

FLOOR STANDING STEREO/HOME THEATER FRONT/SURROUND

**ELECTRO  
MOTION  
SERIES**

### A LEGEND REBORN

The ElectroMotion *ESL* represents a bold new direction for electrostatic loudspeaker design. Featuring a full-sized 34-inch tall curvilinear XStat™ electrostatic transducer and a superbly integrated high-performance woofer, the new EM-*ESL* performs more like a mini-flagship than an entry level audiophile speaker. Designed for both 2-channel music enthusiasts and those seeking the worlds most articulate and dynamic multi-channel home theater systems, the EM-*ESL* is the most compelling 'affordable' audiophile-grade speaker ever brought to market.

<i>Frequency Response</i>	42–22,000 Hz ± 3dB
<i>Sensitivity</i>	91 dB/2.83 volts/meter
<i>Impedance</i>	6 Ohms, 1.6 @ 20 kHz. Compatible with 4, 6, or 8 Ohm rated amplifiers.
<i>Crossover Frequency</i>	500 Hz
<i>High/Mid Frequency Driver</i>	34" x 8.6" (86 x 22 cm) CLS XStat electrostatic (292 in <sup>2</sup> /1,886 cm <sup>2</sup> )
<i>Low Frequency Driver</i>	8" (20.3 cm) paper cone
<i>Recommended Amplifier Power</i>	20–300 watts per channel
<i>Weight</i>	35.5 lbs. (21.4 kg) per channel
<i>Dimensions (HxWxD)</i>	52.1" x 9" x 16.3" (132.3 x 22.9 x 41.4 cm)

**ElectroMotion**™ *ESL*  
MARTIN LOGAN

The Great American Speaker Company  
[www.martinlogan.com](http://www.martinlogan.com)

For detailed amplifier recommendations and complete specifications visit [www.MartinLogan.com](http://www.MartinLogan.com).

### Application:

Stereo speaker or home theater front/surround ideal for medium and small rooms.

The world's most affordable high-performance hybrid electrostatic loudspeaker, combines a MartinLogan CLS™ XStat™ transducer and an 8-inch woofer to deliver legendary MartinLogan sound.

### Key Features:

- CLS™ XStat electrostatic transducer
- Ultra rigid AirFrame
- 8-inch high-excursion woofer
- Precision built advanced topology Vojtko™ crossover
- Custom ETC™ spikes
- Low-voltage power supply

### FINISH OPTION

**Black**



©2010 MartinLogan, Ltd. All rights reserved.

# EM-ESL X

## Electrostatic Speaker

### SPECIFICATIONS

#### System Frequency Response

41–22,000 Hz  $\pm 3$  dB

#### Recommended Amplifier Power

20–400 Watts per channel

#### Dispersion

Horizontal: 30 degrees

Vertical: 40° (101.6 cm) line source

#### Sensitivity

91 dB / 2.83 volts / meter

#### Impedance

6 ohms (1.6 ohms @ 20 kHz min.). Compatible with 4, 6, or 8 ohm rated amplifiers

#### Crossover Frequency

400 Hz

#### High-Frequency Driver

XStat™ CLS™ Electrostatic transducer

Panel dimensions: 40" x 8.6" (101.6 cm x 21.8 cm)

Radiating area: 344 in<sup>2</sup> (2,215 cm<sup>2</sup>)

#### Woofers

Two 8" (20.3 cm) high excursion, high-rigidity paper cones with extended throw driver assembly, non-resonance asymmetrical chamber format, bass reflex

#### Components

Custom-wound audio transformer, air core coils, large steel laminate inductors, polyester capacitors, and low DF electrolytic capacitors

#### Weight

52 lbs. each (23.6 kg)

#### Size (H x W x D)

59.2" x 9.4" x 20.7" (150.3 cm x 23.8 cm x 52.6 cm)

*Specifications are subject to change without notice.*



**The ElectroMotion ESL X is an introduction to a new world of high performance audio.** Highly efficient, with superbly integrated bass performance, the EM-ESL X will perform admirably with AV receivers as well as high-end amplifiers.

Equipped with a larger XStat™ electrostatic transducer than the EM-ESL, the EM-ESL X has a radiating area over 50in<sup>2</sup> larger. Twin 8-inch high-excursion woofers are housed in a surprisingly small, non-resonant asymmetrical bass reflex ported chamber. Dual audiophile-grade, doped-fiber cone woofers, custom designed by MartinLogan's in-house design and engineering team, optimize cone suspension and the magnetic flux field to produce big bass output with vanishingly low distortion.

The specially developed ElectroMotion XStat MicroPerf electrostatic panel is housed using AirFrame™ Technology. AirFrame technology, a composite of aluminum and composite materials, keeps the electrostatic panel rigid without obstructing playable surface area or interfering with ambience-enriching dipole sound radiation.

# EM-ESL C

## Center Channel Speaker

### SPECIFICATIONS\*

**System Frequency Response**

66–23,000 Hz ±3db

**Recommended Amplifier Power**

20–300 watts per channel

**Dispersion**

Horizontal: 30 Degrees

**Sensitivity**

89 dB/2.83 volts/meter

**Impedance**

4 ohms. Compatible with 4, 6, or 8 ohm rated amplifiers.

**Crossover Frequency**

600, 3,400 Hz

**High-Frequency Driver**

1" x 1.4" (2.6cm x 3.6cm) Folded Motion Transducer with 5.25" x 1.75" (13.3cm x 4.4cm) diaphragm.

**Mid-Frequency Driver**

23" x 6.375" (58.4cm x 16.2cm) CLS™ XStat™ electrostatic with two 9" x 6.375" (22.8cm x 16.2cm) transducers with total playable area 114 in<sup>2</sup> (740cm<sup>2</sup>)

**Woofers**

Two 5.25" (13.4 cm) high excursion, high-rigidity aluminum cone with extended throw driver assembly, non-resonance asymmetrical chamber format.

**Components**

Custom-wound audio transformer, air core coils, low dcr steel laminate coils, polyester capacitors

**Weight**

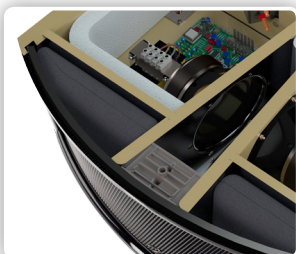
32 lbs. each (14.5 kg)

**Dimensions (H x W x D)**

7.6" h x 22.8" w x 16.1" d

(19.3 cm h x 57.9 cm w x 40.9 d cm)

\*Specifications are subject to change without notice.



**The Center of Your ElectroMotion Home Theater** MartinLogan's economical ElectroMotion ESL C is a high-performance electrostatic center channel loudspeaker. With the exceptional mid-range dynamics of an electrostatic panel, the remarkable details delivered by a Folded Motion® Tweeter, and the addition of a newly-designed CenterForce™ dual woofer system, the most surprising thing about the EM-ESL C isn't its superior performance. It's that the EM-ESL C is compact enough to fit easily into today's most popular A/V furniture. With the EM-ESL C electrostatic center channel loudspeaker, you can match the acoustic signature of your ElectroMotion Series speakers and build a truly astounding home theater system.



# EFX

## SPECIFICATIONS

### Frequency Response

68 – 22,000 Hz  $\pm$ 3dB

### Horizontal Dispersion

30°

### Vertical Dispersion

28" (71 cm) line source

### High Frequency Transducer

XStat™ CLS™ electrostatic transducer

#### » Panel Dimensions

28" x 8.6" (71.1 x 21.8cm)

#### » Radiating Area

241 in<sup>2</sup> (1,550 cm<sup>2</sup>)

### Low Frequency Transducer

6.5" (16.5 cm) high excursion, fiber cone with extended throw drive assembly; bass reflex

### Sensitivity

90 dB/2.83 volts/meter

### Impedance

6 Ohms, 1.3 at 20kHz. Compatible with 4, 6, or 8 Ohm rated amplifiers

### Recommended Amplifier Power

20 – 300 watts per channel

### Crossover Frequency

530Hz

### Components

Custom-wound E-I core transformer, air core coils, metal film capacitors

### Inputs

Custom 5-way bi-wire toolless binding posts

### Power Draw

Idle: < 1W/channel

Max: 2W/channel

### Weight

24.5 lbs. (11.1 kg)

### Dimensions

48.8" x 9.4" x 6.5"

(123.9cm x 23.8cm x 16.5cm)

Specifications are subject to change without notice.



Surround yourself with our slim, on-wall EFX hybrid electrostatic loudspeaker, featuring XStat™ technology that dramatically reduces cabinet size, yet establishes new standards for efficiency, dynamics and precision.

The EFX, MartinLogan's slimmest reference quality on-wall solution to date, provides loyal electrostatic speaker enthusiasts the flexibility for either surround or front solutions in a slim, space saving package. Perfectly suited to hang on the wall next to a flat panel TV, the EFX comes with a sturdy pivoting wall bracket, making it easy to mount and adjust for the best possible multi-channel movie and music experience.

Featuring an advanced crossover topology derived from the MartinLogan CLX™ loudspeaker, the EFX crossover utilizes precision audiophile-grade metal film capacitors and high-purity air-core coils. This design flawlessly preserves microscopic subtleties while handling the broadest range of dynamics contained within even the most demanding sonic source.



# Classic

## ESL 9

**A MASTERPIECE OF DESIGN & ENGINEERING.** Distilling nearly forty years of innovative audio design and engineering into a startlingly fresh loudspeaker ideal.

MartinLogan unveils the Classic ESL 9, its newest modern Masterpiece. All the familiar elements of MartinLogan's flagship ESL series are here, with some revolutionary refinements. The heart of this exceptional loudspeaker is its 9.2-inch-wide XStat™ Curvilinear Line Source (CLS™) vacuum-bonded electrostatic transducer. Advanced MicroPerf stator technology reveals more of the diaphragm surface area than any other electrostatic panel in this size class, efficiently increasing the narrow panel's output. Ultra-rigid AirFrame Blade construction reduces performance-robbing vibrations, its shape creating an expressive alignment with the woofer cabinet. Deep bass is rendered with unflinching accuracy and authority by dual 8-inch low-distortion, high-excursion aluminum cone woofers in a beautifully sculpted enclosure.

### QUICK SPECS:

- 44" x 9.2" XStat™ CLS™ Transducer
- Dual 8-inch Aluminum Cone Woofers
- 34-23,000 Hz ±3dB Frequency Response
- Custom 5-Way Bi-Wire Binding Posts





### System Frequency Response

34–23,000 Hz ± 3db

### Recommended Amplifier Power

50–400 watts per channel at 4 Ohms

### Dispersion

Horizontal: 30 degrees

Vertical: 44-inch (112 cm) line source

### Sensitivity

90 dB / 2.83 volts / meter

### Impedance

Nominal: 4 ohms, 0.8 ohms @ 20 kHz

### Crossover Frequency

380 Hz

### High/Mid Frequency Driver

XStat CLS Electrostatic transducer

Panel dimensions: 44 x 9.2 inch (112 x 23.4 cm)

Radiating area: 405 in<sup>2</sup> (2,621 cm<sup>2</sup>)

### Woofers

2x 8" (20.3cm) cast basket, high excursion, rigid aluminum cone with extended throw drive assembly, non-resonance asymmetrical chamber format.

### Components

Custom-wound audio transformer, air core coils, low DCR steel laminate coils, polyester capacitors

### Signal Inputs

Custom 5-way bi-wire tool-less binding posts

### Power Draw

Max: 2W per channel

Standby: <1W per channel

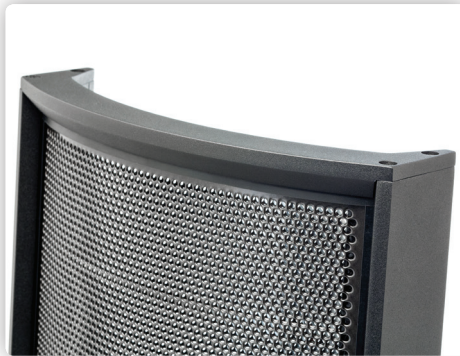
### Weight

78 lbs. each (35.4 kg)

### Size (H x W x D)

59.8 x 10.4 x 25.4-inch (152 x 26.4 x 64.6 cm)

*Specifications are subject to change without notice.*



### Finish Options:







# *Impression*

## ESL 11A

**EMOTIONAL REALISM.** Impressionist masters inspired potent feelings by removing the barrier between art and emotion. The Impression ESL 11A achieves this same effect, with an unprecedented level of audio transparency and realism revealing the pure emotional impact of music.

Belonging to MartinLogan's Masterpiece Series, the Impression ESL 11A reveals an impactful and accurate bass performance with a dual 8-inch woofer system powered by dual 275-watt Class-D amplifiers and honed by Anthem Room Correction technology. The groundbreaking integration of this woofer system with MartinLogan's signature XStat CLS transducer delivers a dynamic, transparent audio performance—an experience of pure audio pleasure with nothing coming between your music and ears.

### **QUICK SPECS:**

- 44" x 11" XStat™ CLS™ Transducer
- Dual 8-inch PoweredForce Forward™ Woofers
- Dual 275W / Channel (4 ohms) Amplifiers
- 29–23,000 Hz ±3dB Frequency Response
- 24-bit Vojtko™ DSP Engine
- WBT Binding Posts
- Anthem Room Correction (ARC™)  
*(sold separately)*





### System Frequency Response

29–23,000 Hz  $\pm$ 3 dB

### Recommended Amplifier Power

50–550 Watts per channel at 4 ohms

### Dispersion

Horizontal: 30 degrees

Vertical: 44-inch (112 cm) line source

### Sensitivity

91 dB / 2.83 volts / meter

### Impedance

Nominal: 4 ohms, 0.6 ohms @ 20 kHz

### Crossover Frequency

300 Hz

### High/Mid Frequency Driver

XStat CLS Electrostatic transducer

Panel dimensions: 44 x 11-inch (112 cm x 28 cm)

Radiating area: 484 in<sup>2</sup> (3,136 cm<sup>2</sup>)

### Woofers

Two 8-inch (20.3 cm) cast basket, high excursion, rigid aluminum cone with extended throw drive assembly, non-resonance asymmetrical chamber format

### Amplifier

Woofer: 2 x 275 watts / channel (4 ohms),

2 x 550 watts peak

### Room Correction (Woofer System)

Anthem Room Correction (ARC™) ready

(sold separately)

### Components

Custom-wound audio transformer, air core coils, polypropylene capacitors. 24-bit DSP based preamplifier (used with woofer amplifier)

### Controls

Bass:  $\pm$ 10 dB under 75 Hz

Mid-Bass: -2 dB, 0 dB, +2 dB

ARC™ Room EQ: On, Off

### Signal Inputs

WBT-0703 Cu nextgen™ 5-way binding posts feature a filigree signal conductor made from gold plated, nickel free, non ferromagnetic, pure copper for high conductivity and fully insulated. Free from eddy current effects

### Inputs

AC Power, RJ45 (for ARC), mini USB (for ARC)

### Power Draw

Max: 500 W per channel

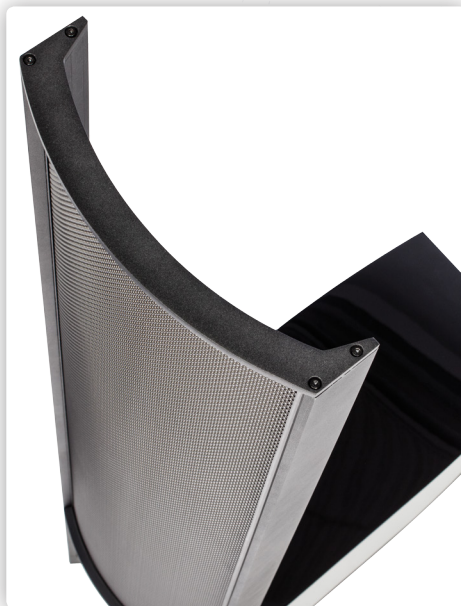
Standby: <1 W per channel

### Weight

90 lbs. each (40.9 kg)

### Size (H x W x D)

60.75 x 11.9 x 27.4-inch (154.3 cm x 30.2 cm x 69.6 cm)



### Finish Options:



### Premium Finish Options:



Specifications are subject to change without notice.



# Expression

## ESL 13A

**A MASTERPIECE OF DESIGN & ENGINEERING.** Distilling nearly forty years of innovative audio design and engineering into a startlingly fresh loudspeaker ideal.

Expression ESL 13A represents a major evolution of our classic electrostatic loudspeaker. All of the familiar elements are here, along with some revolutionary refinements. At the heart of this exceptional loudspeaker you'll find a 13-inch Curvilinear Line Source (CLS™) XStat™ vacuum-bonded electrostatic transducer with advanced MicroPerf™ stator technology and ultra-rigid AirFrame™ Blade construction. The powerfully dynamic low-frequency experience is rendered with unflinching accuracy and authority courtesy of dual 10-inch low-distortion aluminum cone woofers. Each woofer is independently powered by a 300-watt Class-D amplifier, and controlled by a 24-Bit Vojtko™ DSP Engine featuring Anthem Room Correction (ARC™) technology.

### QUICK SPECS:

- 44" x 13" XStat™ CLS™ Transducer
- Dual 10-inch PoweredForce Forward™ Woofers
- Dual 300W / Channel (4 ohms) Amplifiers
- 24—23,000 Hz ±3dB Frequency Response
- 24-bit Vojtko™ DSP Engine
- Anthem Room Correction (ARC™)  
*(sold separately)*





### System Frequency Response

24–23,000 Hz  $\pm$ 3 dB

### Recommended Amplifier Power

50–600 Watts per channel at 4 ohms

### Dispersion

Horizontal: 30 degrees

Vertical: 44-inch (112 cm) line source

### Sensitivity

91 dB / 2.83 volts / meter

### Impedance

Nominal: 4 ohms, 0.7 ohms @ 20 kHz

### Crossover Frequency

300 Hz

### High/Mid Frequency Driver

XStat CLS Electrostatic transducer

Panel dimensions: 44 x 13-inch (112 cm x 33 cm)

Radiating area: 572 in<sup>2</sup> (3,696 cm<sup>2</sup>)

### Woofers

Two 10-inch (25.4 cm) cast basket, high excursion, rigid aluminum cone with extended throw drive assembly, non-resonance asymmetrical chamber format

### Amplifier

Woofer: 2 x 300 watts / channel (4 ohms),  
2 x 600 watts peak

### Room Correction (Woofer System)

Anthem Room Correction (ARC™) ready  
(Sold Separately)

### Components

Custom-wound audio transformer, air core coils, polypropylene capacitors. 24-bit DSP based preamplifier (used with woofer amplifier)

### Controls

Bass:  $\pm$ 10 dB under 75 Hz

Mid-Bass: -2 dB, 0 db, +2 db

Light: On, Dim, Off

ARC™ Room EQ: On, Off

### Signal Inputs

WBT-0703 Cu nextgen™ 5-way binding posts feature a filigree signal conductor made from gold plated, nickel free, non ferromagnetic, pure copper for high conductivity and fully insulated. Free from eddy current effects

### Inputs

AC Power, RJ45 (for ARC), mini USB (for ARC)

### Power Draw

Max: 500 W per channel

Standby: 1 W per channel

### Weight

103 lbs. each (46.8 kg)

### Size (H x W x D)

61.5 x 13.4 x 27.5-inch (156.1 cm x 33.9 cm x 69.9 cm)



### Finish Options:



### Premium Finish Options:



Specifications are subject to change without notice.



# Renaissance

## ESL 15A

**A MASTERPIECE OF DESIGN & ENGINEERING.** Distilling nearly forty years of innovative audio design and engineering into a startlingly fresh loudspeaker ideal.

Renaissance ESL 15A represents a major evolution of our classic electrostatic loudspeaker. All of the familiar elements are here, along with some revolutionary refinements. At the heart of this exceptional loudspeaker you'll find a 15-inch Curvilinear Line Source (CLS™) XStat™ vacuum-bonded electrostatic transducer with advanced MicroPerf™ stator technology and ultra-rigid AirFrame™ Blade construction. The powerfully dynamic low-frequency experience is rendered with unflinching accuracy and authority courtesy of dual 12-inch low-distortion aluminum cone woofers. Each woofer is independently powered by a 500-watt Class-D amplifier, and controlled by a 24-Bit Vojtko™ DSP Engine featuring Anthem Room Correction (ARC™) technology.

### QUICK SPECS:

- 46" x 15" XStat™ CLS™ Transducer
- Dual 12-inch PoweredForce Forward™ Woofers
- Dual 500W / Channel (4 ohms) Amplifiers
- 22—21,000 Hz ±3dB Frequency Response
- 24-bit Vojtko™ DSP Engine
- Anthem Room Correction (ARC™) ready





### System Frequency Response

22–21,000 Hz  $\pm 3$  dB

### Recommended Amplifier Power

50–700 Watts per channel at 4 ohms

### Dispersion

Horizontal: 30 degrees

Vertical: 46" (116.9 cm) line source

### Sensitivity

92 dB / 2.83 volts / meter

### Impedance

Nominal: 4 ohms, 0.5 ohms @ 20 kHz

### Crossover Frequency

300 Hz

### High/Mid Frequency Driver

XStat CLS Electrostatic transducer

Panel dimensions: 46" x 15" (116.9 cm x 38.1 cm)

Radiating area: 690 in<sup>2</sup> (4,454 cm<sup>2</sup>)

### Woofers

Two 12" (30.5 cm) cast basket, high excursion, rigid aluminium cone with extended throw drive assembly, non-resonance asymmetrical chamber format

### Amplifier

Woofer: 2 x 500 watts / channel (4 ohms),

2 x 1,000 watts peak

### Room Correction (Woofer System)

Anthem Room Correction (ARC™) ready

(Sold Separately)

### Components

Custom-wound audio transformer, air core coils, polypropylene capacitors. 24-bit DSP based preamplifier (used with woofer amplifier)

### Controls

Bass:  $\pm 10$  dB under 75 Hz

Mid-Bass: -2 dB, 0 db, +2 db

Light: On, Dim, Off

ARC™ Room EQ: On, Off

### Signal Inputs

WBT-0703 Cu nextgen™ 5-way binding posts feature a filigree signal conductor made from gold plated, nickel free, non ferromagnetic, pure copper for high conductivity and fully insulated. Free from eddy current effects

### Inputs

AC Power, RJ45 (for ARC), mini USB (for ARC)

### Power Draw

Max: 900 W per channel

Standby: <0.5 W per channel

### Weight

140 lbs. each (63.5 kg)

### Size (H x W x D)

69.8" x 15.75" x 28.9" (177.3 cm x 40 cm x 63.3 cm)

Specifications are subject to change without notice.

### Finish Options:



### Premium Finish Options:





# *Focus*

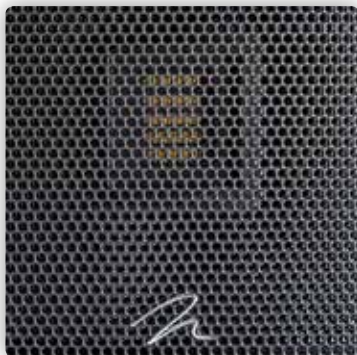
## ESL C18

**THE FOCUS ESL C18 IS A MASTERPIECE OF CENTER CHANNEL DESIGN AND ENGINEERING**, boasting a depth of just 9.6-inches when mounted flat on a wall. Situated just behind the perforated front grill, fixed in a uniquely designed housing, sits a 7.5 x 18-inch electrostatic panel and Folded Motion tweeter. The combined performance characteristics of the electrostatic panel and the Folded Motion Tweeter ensure precision and hyper-realistic front-stage blending. This kind of mid- and high-frequency performance can only be supported by a foundation of tremendous low-end, so the Focus ESL C18 also features a passive array of twin 6.5-inch aluminum cone woofers, capable of deep bass reproduction down to 50Hz. The Focus ESL C18 is also at home on a shelf or floor stand—just toggle the “On-Wall/Off-Wall” acoustic contour switch to instantly optimize performance for any mounting position.

### **QUICK SPECS:**

- CLS™ XStat™ electrostatic transducer
- Folded Motion XT tweeters
- Two 6.5-inch cast basket, high excursion, rigid aluminum cones
- 50–23,000 Hz ± 3db frequency response
- WBT binding posts
- Wall or table mount





### System Frequency Response

50–23,000 Hz ± 3db

### Recommended Amplifier Power

50–400 watts

### Dispersion

Horizontal: 30 degrees

### Sensitivity

90 dB/2.83 volts/meter

### Impedance

Nominal 4 ohms

### Crossover Frequency

470, 3,000 Hz

### High Frequency Driver

1" x 1.4" (2.6cm x 3.6cm) Folded Motion Transducer with 5.25" x 1.75" (13.3cm x 4.4cm) diaphragm.

### Mid Frequency Driver

18" x 7.5" (45.7cm x 19.1cm) CLS™ XStat™ electrostatic transducer with total playable area 135 in<sup>2</sup> (873cm<sup>2</sup>).

### Woofers

Two 6.5" (16.5cm) cast basket, high excursion, rigid aluminum cone with extended throw drive assembly, non-resonance asymmetrical chamber format.

### Components

Custom-wound audio transformer, air core coils, low dcr steel laminate coils, polyester capacitors.

### Controls

Position: On-Wall / Off-Wall

### Signal Inputs

WBT-0703Cu nextgen™ 5-way binding posts feature a filigree signal conductor made from gold plated, nickel free, nonferromagnetic, pure copper for high conductivity and fully insulated. Free from eddy current effects.

### Weight

50 lbs. each (22.7 kg)

### Size (H x W x D, Table Mount)

9.6 x 43.2 x 9.2-inch (24.4 x 109.7 x 23.4 cm)

### Size (H x W x D, Installed On Wall, Flat Mount)

9.4 x 43.2 x 9.6-inch (23.9 x 109.7 x 24.5 cm)

### Size (H x W x D, Installed On Wall, Angled Up)

11 x 43.2 x 11.2-inch (27.9 x 109.7 x 28.3 cm)

### Size (H x W x D, Installed On Wall, Angled Down)

11.3 x 43.2 x 11.5-inch (28.8 x 109.7 x 29.1 cm)

*Specifications are subject to change without notice.*

### Finish Options:



### Premium Finish Options:







# *Illusion*

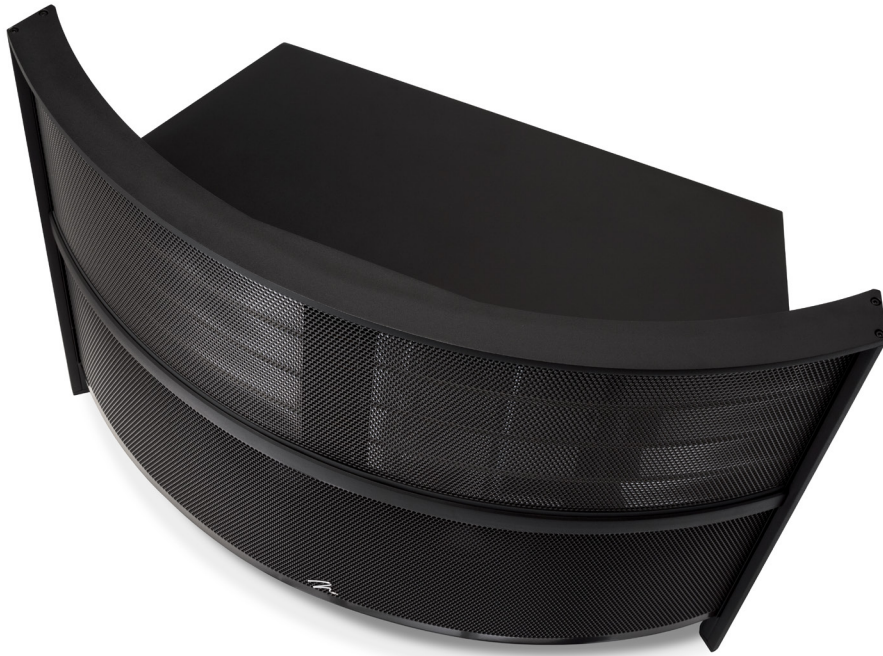
## ESL C34A

**A MASTERFUL CINEMATIC EXPERIENCE.** There are no illusions about the performance of the Illusion ESL C34A. A center channel speaker is the most important speaker in a multi-channel audio system, tasked with reproducing the most important audio information for imaging and realism: cinematic dialogue, anchoring effects, and a large portion of the front stage speaker information. This ultimate performance floorstanding center channel loudspeaker blurs the lines between performance and reality by combining the dynamics of a 34-inch wide XStat CLS electrostatic transducer with the detailed imaging capability of MartinLogan's exclusive Folded Motion XT tweeters. Four laser-engineered 6.5-inch woofers, driven by 250 watts of clean amplification with on-board Anthem Room Correction (ARC™) Technology, anchor the image to your screen and deliver big cinema impact. New technology joined with proven innovation produces a center channel loudspeaker unlike any other.

### **QUICK SPECS:**

- 34.5" x 8" XStat™ CLS™ Transducer
- Dual Folded Motion XT Tweeters
- 45–23,000 Hz ±3dB Frequency Response
- Four 6.5-inch PoweredForce Forward™ Woofers with 250W Amplifier
- 24-bit Vojtko™ DSP Engine
- Anthem Room Correction (ARC™) ready





### System Frequency Response

45–23,000 Hz  $\pm$ 3db

### Recommended Amplifier Power

50–600 watts per channel

### Dispersion

Horizontal: 30 degrees

### Sensitivity

90 dB/2.83 volts/meter

### Impedance

Nominal 6 ohms

### Crossover Frequency

500, 2,000 Hz

### High Frequency Driver

Two 1.25 x 2.4-inch (3.2cm x 6.1cm) Folded Motion Transducer with 4.5 x 2.75-inch (11.4cm x 7cm) diaphragm.

### Mid Frequency Driver

34.5 x 8-inch (87.6cm x 20.3cm) CLS XStat electrostatic with two 16 x 8-inch (40.6 cm x 20.3 cm) playable areas (256 in<sup>2</sup>/1,652 cm<sup>2</sup>)

### Woofers

Four 6.5-inch (16.5cm) cast basket, high excursion, rigid aluminum cone with extended throw driver assembly, non-resonance asymmetrical chamber format.

### Amplifier

1 x 250 watts/channel (4 ohms), 500 watts peak

### Room Correction (Woofer System)

Anthem Room Correction™ (ARC™) Ready  
(sold separately)

### Components

Custom-wound audio transformer, air core coils, Polypropylene capacitors. 24bit DSP based preamplifier (used with woofer amplifier).

### Controls

Bass:  $\pm$ 10dB under 75Hz  
Mid-Bass: -2dB, 0dB, +2dB  
ARC Room EQ: On, Off

### Signal Inputs

WBT-0703Cu nextgen™ 5-way binding posts feature a filigree signal conductor made from gold plated, nickel free, non-ferromagnetic, pure copper for high conductivity and fully insulated. Free from eddy current effects.

### Inputs

AC Power, RJ45 (For ARC), mini USB (For ARC™)

### Power Draw

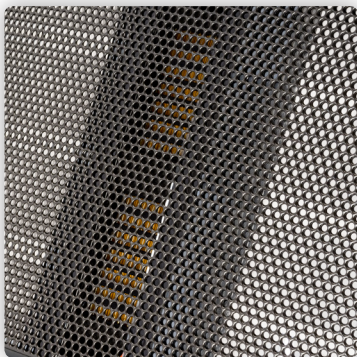
Max: 300W per channel  
Standby: <1W per channel

### Weight

90 lbs. each (40.9 kg)

### Size (H x W x D)

23.75 x 32.35 x 23.1-inch (60.3 x 82.2 x 58.6 cm)



### Finish Options:



### Premium Finish Options:



Specifications are subject to change without notice.

# CLX ART

## SPECIFICATIONS

### Frequency Response

56 – 23,000 Hz  $\pm$ 3dB

### Horizontal Dispersion

30°

### Vertical Dispersion

57" (145 cm) line source

### High Frequency Transducer

XStat™ CLS™ electrostatic transducer

#### » Panel Dimensions

57" x 8.6" (144.8 x 21.8 cm)

#### » Radiating Area

490 in<sup>2</sup> (3,157 cm<sup>2</sup>)

### Low Frequency Transducer

DualForce™ double diaphragm, triple stator dipole low-frequency electrostatic transducer

#### » Panel Dimensions

57" x 11.5" (144.8 x 29.2 cm)

#### » Radiating Area

656 in<sup>2</sup> (4,228 cm<sup>2</sup>)

### Sensitivity

90 dB/2.83 volts/meter

### Impedance

6 Ohms, 0.7 at 20kHz. Compatible with 4, 6, or 8 Ohm rated amplifiers

### Recommended Amplifier Power

20–450 watts per channel

### Crossover Frequency

360Hz

### Components

Thick film on alumina substrate resistors, air core coils, polypropylene capacitors, and custom wound toroidal audio transformers

### Lighting

Light intensity dimmer controls

### Inputs

Custom binding posts

### Weight

110 lbs. (50 kg)

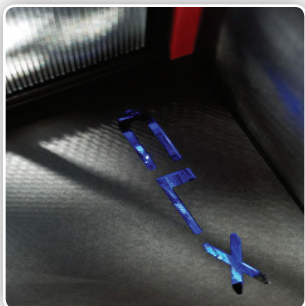
### Dimensions

70.32" x 25.75" x 14.69"  
(178.6 cm x 65.4 cm x 37.3 cm)

*Specifications are subject to change without notice.*



*Sound at its purest permeates a room, satisfying even the most critical ear. As the industry benchmark for resolving sonic detail, CLX technology employs dual electrostatic transducers to render the most complex musical passages as faithfully as a crystal prism disperses the full color spectrum.*



CLX's DualForce double-diaphragm, triple-stator electrostatic transducer delivers deep, dynamic bass with twice the force of a standard electrostatic loudspeaker. In addition, its low-frequency dipole-stabilization technology reduces sound compromising rear wave cancellation inherent in dipole transducers. This is accomplished by increasing the air path length behind the CLX thereby delaying the out-of-phase back wave. The decrease in low-frequency front-wave cancellation increases overall output while minimizing total harmonic distortion at low frequencies. The CLX ART incorporates our most popular upgrades including Art Frame styling, stainless steel binding posts, and premium power cords.

CLX ART is the world's finest full range electrostatic speaker, and represents the culmination of everything we have learned about electrostatic technology since we brought our first product to market in 1983.



MARTIN LOGAN®

# NEOLITH™



## Standard Color Options



**Rosso Fuoco**  
Gloss Red



**Cordoba Red**  
Metallic Maroon



**Deep Sea Blue**  
Metallic Blue



**Basalt Black**  
Metallic Black



**Arctic Silver**  
Metallic Silver  
*(Light)*



**Desert Silver**  
Metallic Silver  
*(Tan Tint)*



**Meteor Grey**  
Metallic Silver  
*(Dark)*



MARTIN LOGAN®

# NEOLITH™

**System Frequency Response:**

23–22,000 Hz ± 3db

**Recommended Amplifier Power:**

50–1,300 watts per channel at 4 Ohms

**Dispersion:**

*Horizontal:* 30 Degrees

*Vertical:* 48" (122 cm) line source

**Sensitivity:**

90 dB/2.83 volts/meter

**Impedance:**

*Nominal:* 4 ohms, 0.43 ohms @ 20 kHz.

**Crossover Frequency:**

60, 250–400 Hz

**High/Mid Frequency Driver:**

48" x 22" (122 x 56 cm) CLS XStat electrostatic (1,056 in<sup>2</sup>/6,813 cm<sup>2</sup>)

**Woofers:**

15" (38.1cm) cast basket, high excursion, rigid aluminum cone with extended throw drive assembly. Extensively vented triple shorting ring motor and 4-layer coil to eliminate compression and distortion.

12" (30.5cm) round cast aluminum alloy frame, high excursion, rigid carbon fiber sandwich cone with long throw design, 3-inch (7.5cm) diameter copper-clad aluminum flat wire voice coil, and vented pole piece and under-spider opening to reduce power compression.

**Enclosure:**

Phenolic Resin Polymer: Dense substrate with superb mechanical strength minimizes cabinet vibrations caused by woofer cone motion counter forces to provide an ideal baffle for the electrostatic panel and woofers.

**Components:**

*High-Pass Crossover:* 1% resistors mounted to heat sinks, polypropylene capacitors, air core inductors, dual toroidal audio transformers to drive electrostatic element

*Low-Pass Crossover:* 1% resistors mounted to heat sinks, toroidal inductors, supports user options to modify sound output via jumpers

**Bass Control:**

0dB, -4dB, -8dB

**Distance Control:**

3 meters (or less), 4 meters, 5 meters (or greater)

**Light Control:**

On, Dim, Off

**Signal Inputs:**

WBT-0705Ag nextgen™ 5-way bi-wire binding posts feature a filigree signal conductor made from fine silver for high conductivity. Fully insulated for CE and IEC conformity providing shock hazard protection. Free from eddy current effects. Max constant current 30 A, admissible peak current 200 A. Outer metal cap with palladium plated finish.

**Mains Power Draw:**

*Standby:* 1W each

*Max:* 10W each

**Weight:**

385 lbs. each (175 kg)

**Size (H x W x D):**

74.8" x 30.3" x 34.2" (189.9 x 76.9 x 87 cm)

**Weight (Crated):**

600 lbs. each (273 kg)

**Crate Size (H x W x D):**

39.7" x 39" x 82.6" (100.8 x 99 x 210 cm)

*Specifications are subject to change without notice.*

# Motion SLM, SLM XL, and SLM X3

Ultra-Slim Folded Motion® Speakers

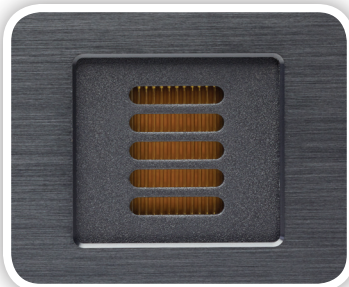


**SLM X3**  
Horizontal, On-wall or Off-wall



**SLM XL**  
Horizontal or Vertical  
On-wall or Off-wall

**SLM**  
Horizontal or Vertical  
On-wall or Off-wall



**Slender Profile and Stunning Performance.** The secret to the outstanding performance of the Motion SLM and SLM XL are the innovative dual 4-inch, ultra-slim fiber cone woofers and 4-inch high-velocity passive bass radiators, paired with a Folded Motion tweeter. Motion SLM X3's 3-channel soundbar design ups the ante with three Folded Motion tweeters and six 4-inch ultra-slim fiber cone woofers. The result is stunning acoustical alchemy typically found in much larger speaker systems. Hidden discretely underneath the grille, the drivers are held securely in place by a solid, black-anodized brushed aluminum baffle mounted flush within the speaker's high-gloss black cabinet. The speakers are less than 2-inches deep when installed on-wall with the magnetic grilles and low-profile wall mount brackets.

**The Perfect LCR for Today's Flat Screen Televisions.** Folded Motion tweeters have an 80° x 80° dispersion pattern, which allows SLM and SLM XL to sound exactly the same in a horizontal or vertical orientation, making them perfect for Left-Center-Right (LCR) system applications. The logo on the grille is magnetic and can move and rotate to the proper aesthetically pleasing location in any orientation. SLM and SLM XL both include a base designed for vertical applications, allowing the speakers sit on a shelf or equipment cabinet. For applications where on-wall installation is not an option, SLM, SLM XL, and SLM X3 include "kick-stand" brackets that attach to the back of the cabinet, allowing them to free-stand beneath a television.



SLM and SLM XL Paintable White Grilles (sold separately)



SLM



SLM XL



SLM X3

## Motion<sup>®</sup> SLM MARTIN LOGAN

**System Frequency Response**  
110–22,000 Hz ±3 dB

**Dispersion**  
80° x 80°

**Recommended Amplifier Power**  
20–140 Watts

**Maximum Input Power**  
70 Watts

**Sensitivity**  
94 dB @2.83 volts/meter

**Impedance**  
4 Ohms. Compatible with 4, 6, or 8 Ohm rated amplifiers.

**Crossover Frequency**  
2,600 Hz

**High Frequency Driver**  
1" x 1.4" (2.6cm x 3.6cm) Folded Motion Transducer with 5.25" x 1.75" (13.3cm x 4.4cm) diaphragm.

**Low Frequency Driver**  
Two 4" (10.2cm) paper cone. Two 4" (10.2cm) paper cone passive radiators.

**Components**  
Custom air core coil inductors. Polyester film capacitors in series and low DF electrolytic capacitors in parallel. Overall system thermal/current protection.

**Cabinet**  
Sealed

**Binding Post Inputs**  
Push style

**Finish**  
Gloss Black

**Accessories (included)**  
Wall mount bracket, vertical table stand, horizontal stands

**Accessories (sold separately)**  
Paintable white grille cover

**Weight**  
6.5 lbs. each (3 kg)

**Size (H x W x D)**  
25.3" x 6.4" x 1.83" (64.2 x 16.2 x 4.75 cm)

## Motion<sup>®</sup> SLMXL MARTIN LOGAN

**System Frequency Response**  
100–25,000 Hz ±3 dB

**Dispersion**  
80° x 80°

**Recommended Amplifier Power**  
20–140 Watts

**Maximum Input Power**  
70 Watts

**Sensitivity**  
94 dB @2.83 volts/meter

**Impedance**  
4 Ohms. Compatible with 4, 6, or 8 Ohm rated amplifiers.

**Crossover Frequency**  
3,100 Hz

**High Frequency Driver**  
1" x 1.4" (2.6cm x 3.6cm) Folded Motion Transducer with 5.25" x 1.75" (13.3cm x 4.4cm) diaphragm.

**Low Frequency Driver**  
Two 4" (10.2cm) paper cone. Four 4" (10.2cm) paper cone passive radiators.

**Components**  
Custom air core coil inductors. Polyester film capacitors in series and low DF electrolytic capacitors in parallel. Overall system thermal/current protection.

**Cabinet**  
Sealed

**Binding Post Inputs**  
Push style

**Finish**  
Gloss Black

**Accessories (included)**  
Wall mount bracket, vertical table stand, horizontal stands

**Accessories (sold separately)**  
Paintable white grille cover

**Weight**  
9 lbs. each (4.1 kg)

**Size (H x W x D)**  
34.1" x 6.4" x 1.89" (86.7 x 16.2 x 4.8 cm)

## Motion<sup>®</sup> SLMX3 MARTIN LOGAN

**System Frequency Response**  
120–23,000 Hz ±3 dB

**Dispersion**  
80° x 80°

**Recommended Amplifier Power**  
20–140 Watts

**Maximum Input Power**  
70 Watts

**Sensitivity**  
93 dB @2.83 volts/meter

**Impedance**  
4 Ohms. Compatible with 4, 6, or 8 Ohm rated amplifiers.

**Crossover Frequency**  
3,000 Hz

**High Frequency Driver**  
Three 1" x 1.4" (2.6cm x 3.6cm) Folded Motion Transducer with 5.25" x 1.75" (13.3cm x 4.4cm) diaphragm.

**Low Frequency Driver**  
Six 4" (10.2cm) paper cone.

**Components**  
Custom air core coil inductors. Polyester film capacitors in series and low DF electrolytic capacitors in parallel. Overall system thermal/current protection.

**Cabinet**  
Sealed

**Binding Post Inputs**  
Push style

**Finish**  
Gloss Black

**Accessories (included)**  
Wall mount bracket, horizontal stands

**Accessories (sold separately)**  
N/A

**Weight**  
13 lbs. each (5.9 kg)

**Size (H x W x D)**  
6.3" x 48" x 2" (16.2 x 122 x 5.1 cm)

Specifications are subject to change without notice.

Motion SLM, SLM XL, and SLM X3 Ultra-Slim Folded Motion Speakers



# Motion 2i, 4i, 6i, and 8i

Folded Motion® Front, Center, and Surround Speakers



**Audiophile performance without an audiophile price.** Inspired by the clarity and detail of MartinLogan's ultra-high-end electrostatic loudspeakers, Motion 2i, 4i, 6i, and 8i feature exquisite Folded Motion tweeters and powerful bass technology in compact and affordable packages. Key to performance is the lightning fast response of the tweeter's light-weight diaphragm combined with a large surface area (much larger than a typical one-inch dome tweeter) which together achieve a smooth, refined sound with stunning dynamic range and jaw-dropping clarity—certain to inspire envy in audiophiles and non-audiophiles alike. Precision Vojtko™ crossover topology features custom air core coil inductors, low DCR steel laminate inductors, and polyester film and low DF electrolytic capacitors for a seamless sonic presentation. Flexible installation options allow table top or on-wall installation of all four speakers. Motion 2i and 4i bookshelf speakers can also mount upside down to facilitate placement high on a wall. Motion 6i and 8i can mount horizontally or vertically around a wall-mounted flat screen television.





## Motion<sup>®</sup> 2i MARTIN LOGAN

**System Frequency Response**  
115–23,000 Hz ±3 dB

**Dispersion**  
80° x 80°

**Recommended Amplifier Power**  
20–100 Watts

**Maximum Input Power**  
50 Watts

**Sensitivity**  
86 dB @2.83 volts/meter

**Impedance**  
6 Ohms. Compatible with 4, 6, or 8 Ohm rated amplifiers.

**Crossover Frequency**  
3,800 Hz

**High Frequency Driver**  
0.94" x 1" (2.4cm x 2.5cm) Folded Motion Transducer with 2.8" x 1.25" (7.1cm x 3.2cm) diaphragm.

**Low Frequency Driver**  
3.5" (8.9cm) poly cone with stamped steel basket. Non-resonant asymmetrical chamber format. Rigid structured dust cap to reduce cone break-up modes.

**Components**  
Custom air core coil and low DCR steel laminate inductors. Polyester film capacitors in series and low DF electrolytic capacitors in parallel. Overall system thermal/current protection.

**Cabinet**  
Sealed

**Binding Post Inputs**  
Push style with banana jacks

**Finish**  
Gloss Black

**Accessories (included)**  
Wall mount bracket

**Weight**  
3.4 lbs. each (1.54 kg)

**Size (H x W x D)**  
10" x 4.7" x 4.6" (25.5 x 11.8 x 11.7 cm)

## Motion<sup>®</sup> 4i MARTIN LOGAN

**System Frequency Response**  
70–23,000 Hz ±3 dB

**Dispersion**  
80° x 80°

**Recommended Amplifier Power**  
20–150 Watts

**Maximum Input Power**  
75 Watts

**Sensitivity**  
90 dB @2.83 volts/meter

**Impedance**  
4 Ohms. Compatible with 4, 6, or 8 Ohm rated amplifiers.

**Crossover Frequency**  
2,900 Hz

**High Frequency Driver**  
1" x 1.4" (2.6cm x 3.6cm) Folded Motion Transducer with 5.25" x 1.75" (13.3cm x 4.4cm) diaphragm.

**Low Frequency Driver**  
4" (10.2cm) paper cone with stamped steel basket. Non-resonant asymmetrical chamber format. Rigid structured dust cap to reduce cone break-up modes.

**Components**  
Custom air core coil and low DCR steel laminate inductors. Polyester film capacitors in series and low DF electrolytic capacitors in parallel. Overall system thermal/current protection.

**Controls**  
Folded Bass Reflex Port

**Binding Post Inputs**  
Push style with banana jacks

**Finish**  
Gloss Black

**Accessories (included)**  
Wall mount bracket

**Weight**  
6 lbs. each (2.72 kg)

**Size (H x W x D)**  
12.6" x 5.6" x 5.7" (32 x 14.3 x 14.5 cm)

## Motion<sup>®</sup> 6i MARTIN LOGAN

**System Frequency Response**  
120–23,000 Hz ±3 dB

**Dispersion**  
80° x 80°

**Recommended Amplifier Power**  
20–130 Watts

**Maximum Input Power**  
65 Watts

**Sensitivity**  
89 dB @2.83 volts/meter

**Impedance**  
6 Ohms. Compatible with 4, 6, or 8 Ohm rated amplifiers.

**Crossover Frequency**  
4,000 Hz

**High Frequency Driver**  
0.94" x 1" (2.4cm x 2.5cm) Folded Motion Transducer with 2.8" x 1.25" (7.1cm x 3.2cm) diaphragm.

**Low Frequency Driver**  
Two 3.5" (8.9cm) poly cone with stamped steel basket. Non-resonant asymmetrical chamber format. Rigid structured dust cap to reduce cone break-up modes.

**Components**  
Custom air core coil and low DCR steel laminate inductors. Polyester film capacitors in series and low DF electrolytic capacitors in parallel. Overall system thermal/current protection.

**Cabinet**  
Sealed

**Binding Post Inputs**  
Push style with banana jacks

**Finish**  
Gloss Black

**Accessories (included)**  
Two wall mount brackets

**Weight**  
5.7 lbs. each (2.58 kg)

**Size (H x W x D)**  
5.2" x 17.5" x 4" (13.2 x 44.4 x 10.1 cm)

## Motion<sup>®</sup> 8i MARTIN LOGAN

**System Frequency Response**  
70–23,000 Hz ±3 dB

**Dispersion**  
80° x 80°

**Recommended Amplifier Power**  
20–180 Watts

**Maximum Input Power**  
90 Watts

**Sensitivity**  
89 dB @2.83 volts/meter

**Impedance**  
4 Ohms. Compatible with 4, 6, or 8 Ohm rated amplifiers.

**Crossover Frequency**  
3,000 Hz

**High Frequency Driver**  
1" x 1.4" (2.6cm x 3.6cm) Folded Motion Transducer with 5.25" x 1.75" (13.3cm x 4.4cm) diaphragm.

**Low Frequency Driver**  
Two 4" (10.2cm) paper cone with stamped steel basket. Non-resonant asymmetrical chamber format. Rigid structured dust cap to reduce cone break-up modes.

**Components**  
Custom air core coil and low DCR steel laminate inductors. Polyester film capacitors in series and low DF electrolytic capacitors in parallel. Overall system thermal/current protection.

**Controls**  
Sealed

**Binding Post Inputs**  
Push style with banana jacks

**Finish**  
Gloss Black

**Accessories (included)**  
Two wall mount brackets

**Weight**  
8.5 lbs. each (3.85 kg)

**Size (H x W x D)**  
5.6" x 22" x 5.2" (14.2 x 56 x 13.2 cm)



Specifications are subject to change without notice.

Motion 2i, 4i, 6i, and 8i Folded Motion<sup>®</sup> Front, Center, and Surround Speakers



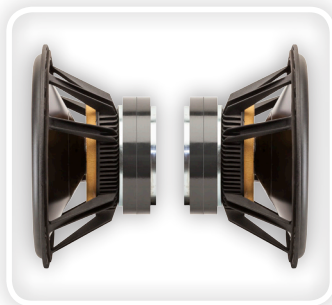
# BalancedForce 210

850 Watt Amplifier. 1,700 Watts Peak System Total.  
Dual 10" Aluminum Cone Woofers.



## Extreme Subwoofer Performance

BalancedForce™ subwoofers are the realization of years of engineering by the MartinLogan team combined with the latest innovations in advanced Digital Signal Processing (DSP), amplification, electrical system designs and room correction (PBK). They are specifically designed to blend with Electrostats without diminishing the wonderful electrostatic snap and midrange clarity. A true no-compromise subwoofer – regardless of application.



The most important achievement in the all-new BalancedForce 210 is driver configuration (*yes, that's where we derived the name!*). Two identical 10-inch drivers – high-performance, high-excursion aluminum-cone woofers – are mounted at a “balanced” 180 degrees apart from each other in the cabinet. As a result, their reaction force vectors exactly cancel, virtually eliminating cabinet resonance and vibration. Gone with them are the cabinet-radiation coloration and bass blur that afflict even the best conventional subwoofers.



## A New Level of Flexibility to System Integration

BalancedForce 210's advanced electrical control system brings new levels of flexibility to system integration, allowing listeners to install speaker-specific custom low-pass filters to assure a perfect match with MartinLogan speakers. Installation is simple - download a custom filter (*FREE from MartinLogan.com*) and save it on a USB thumb drive. Insert the drive in the subwoofer's USB input, and the DSP takes care of the rest! Not using MartinLogan speakers? No problem. BalancedForce 210's robust control system allows the user to dial in the low-pass frequency, phase, and level to match the user's unique requirements.

# BalancedForce 210 (cont'd)

## SPECIFICATIONS

### Frequency Response

20–120 Hz  $\pm$  3 dB. Anechoic through the LFE effects input.

### Low Pass Filter Frequencies

30Hz–80Hz

### Phase

0°, 90°, 180°, 270°

### 25Hz Level Control

$\pm$  10 dB

### Power Control

On, Auto (12V Trigger), Off

### Room Correction

Perfect Bass Kit (PBK) Ready (sold separately)

### Woofers

2 x 10" (25.4 cm) cast-basket, high excursion, aluminum cone with extended throw driver assembly, sealed non-resonant asymmetrical chamber format

### Amplifiers

850 watts RMS (1,700 watts peak)

### Impedance

Left & Right/LFE RCA: 20,000 Ohms

### Inputs

RCA: Left, Right and LFE.

XLR: Left, Right and LFE.

Speaker Level: Left and Right banana jacks.

12V Trigger: 3.5mm.

Mini USB: for PBK

USB: for crossover & firmware updates

### Output (RCA)

Multi Out (for multi-sub connection)

### Input Impedance

RCA: 10k Ohms

XLR: 15k Ohms per phase

Speaker Level: 10k Ohms per phase (20k Ohms red to black)

### Power Draw:

Typical: 125 Watts; Idle: 15 Watts

### Weight

96 lbs. each (43.5 kg)

### Size (H x W x D)

19" H x 19.1" W x 19.4" D

(48.3cm H x 48.6cm W x 49.4cm D)

*Specifications are subject to change without notice.*



Easy Access to all settings: Top mounted controls are discretely hidden beneath a smoked glass accent panel.

### Top Plate Finish Options:



High-Gloss Black



High-Gloss White



Walnut



Dark Cherry



### Perfect Bass Kit (PBK) - Room Correction

Tailor performance to the unique acoustic properties of any room (sold separately).

*BalancedForce 210 Subwoofer*



### BalancedForce 210 Features Include:

- Rigid, Low-Mass Aluminum Element Woofers
- Dual 10-inch BalancedForce™ Woofer Alignment
- PBK Room Correction (sold separately) and Built-In 25Hz Level Control
- Custom Low-Pass Filters For Specific Individual Loudspeaker Models
- Proprietary High-Power Amplifier Delivering a System Peak of 1,700 Watts Peak
- Simultaneous LFE and 2-Channel Connection (via RCA, XLR, and Speaker Level Inputs)
- Sealed Cabinet Enclosure
- Top Mounted Control Interface
- Tone Sweep to Help Identify Room Rattles and Resonances
- 12-Volt Trigger Control
- ETC™ (Energy Transfer Coupler) Spikes



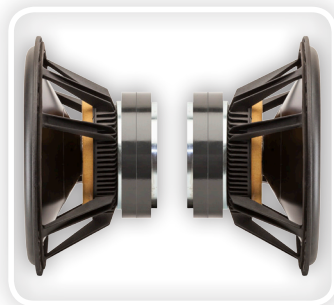
# BalancedForce 212

Dual 850 Watt Amplifiers. 3,400 Watts Peak System Total.  
Dual 12" Aluminum Cone Woofers.

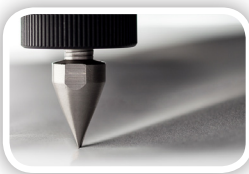


## Ultimate Subwoofer Performance

BalancedForce™ subwoofers are the realization of years of engineering by the MartinLogan team combined with the latest innovations in advanced Digital Signal Processing (DSP), amplification, electrical system designs and room correction (PBK). They are specifically designed to blend with Electrostats without diminishing the wonderful electrostatic snap and midrange clarity. A true no-compromise subwoofer – regardless of application.



The most important achievement in the all-new BalancedForce 212 is driver configuration (*yes, that's where we derived the name!*). Two identical 12-inch drivers – high-performance, high-excursion aluminum-cone woofers – are mounted at a “balanced” 180 degrees apart from each other in the cabinet. As a result, their reaction force vectors exactly cancel, virtually eliminating cabinet resonance and vibration. Gone with them are the cabinet-radiation coloration and bass blur that afflict even the best conventional subwoofers.



## A New Level of Flexibility to System Integration

BalancedForce 212's advanced electrical control system brings new levels of flexibility to system integration, allowing listeners to install speaker-specific custom low-pass filters to assure a perfect match with MartinLogan speakers. Installation is simple - download a custom filter (*FREE from MartinLogan.com*) and save it on a USB thumb drive. Insert the drive in the subwoofer's USB input, and the DSP takes care of the rest! Not using MartinLogan speakers? No problem. BalancedForce 212's robust control system allows the user to dial in the low-pass frequency, phase, and level to match the user's unique requirements.

# BalancedForce 212 (cont'd)

## SPECIFICATIONS

### Frequency Response

18–120 Hz  $\pm$  3 dB. Anechoic through the LFE effects input.

### Low Pass Filter Frequencies

30Hz–80Hz

### Phase

0°, 90°, 180°, 270°

### 25Hz Level Control

$\pm$  10 dB

### Power Control

On, Auto (12V Trigger), Off

### Room Correction

Perfect Bass Kit (PBK) Ready (sold separately)

### Woofers

2 x 12" (30.5 cm) cast-basket, high excursion, aluminum cone with extended throw driver assembly, sealed non-resonant asymmetrical chamber format

### Amplifiers

2 x 850 watts RMS (3,400 watts peak system total)

### Impedance

Left & Right/LFE RCA: 20,000 Ohms

### Inputs

RCA: Left, Right and LFE.

XLR: Left, Right and LFE.

Speaker Level: Left and Right banana jacks.

12V Trigger: 3.5mm.

Mini USB: for PBK

USB: for crossover & firmware updates

### Output (RCA)

Multi Out (for multi-sub connection)

### Input Impedance

RCA: 10k Ohms

XLR: 15k Ohms per phase

Speaker Level: 10k Ohms per phase (20k Ohms red to black)

### Power Draw

Typical: 250 Watts; Idle: 30 Watts

### Cabinet

Sealed

### Weight

140 lbs. each (63.5 kg)

### Size (H x W x D)

22.6" H x 22.6" W x 22.9" D

(57.4cm H x 57.4cm W x 58.2cm D)

*Specifications are subject to change without notice.*



Easy Access to all settings: Top mounted controls are discretely hidden beneath a smoked glass accent panel.

### Top Plate Finish Options:



High-Gloss Black



High-Gloss White



Walnut



Dark Cherry



### Perfect Bass Kit (PBK) - Room Correction

Tailor performance to the unique acoustic properties of any room (sold separately).

*BalancedForce 212 Subwoofer*



### BalancedForce 212 Features Include:

- Rigid, Low-Mass Aluminum Element Woofers
- Dual 12-inch tBalancedForce™ Woofer Alignment
- PBK Room Correction (sold separately) and Built-In 25Hz Level Control
- Custom Low-Pass Filters For Specific Individual Loudspeaker Models
- Two Proprietary High-Power Amplifiers Delivering a System Peak of 3400 Watts
- Simultaneous LFE and 2-Channel Connection (via RCA, XLR, and Speaker Level Inputs)
- Sealed Cabinet Enclosure
- Top Mounted Control Interface
- Tone Sweep to Help Identify Room Rattles and Resonances
- 12-Volt Trigger Control
- ETC™ (Energy Transfer Coupler) Spikes





MARTIN LOGAN



35  
YEARS  
1983 - 2018



# The Next Generation of **Dynamo**<sup>™</sup> Subwoofer Systems

Dynamo **1600X**  
Dynamo **1100X**  
Dynamo **800X**  
Dynamo **600X**  
Dynamo **400**

[martinlogan.com](http://martinlogan.com)

## MARTINLOGAN'S NEW LINE OF GROUND-BREAKING SUBWOOFERS.

Featuring powerful amplifiers and audiophile grade woofers, extensive input options, wireless connectivity, control via a Bluetooth app, Anthem Room Correction (ARC®), and user-configurable front- or down-firing designs, these Dynamo subwoofers represent the most advanced, high-performance, affordable subwoofer systems ever brought to market. Dramatic bass detail and attack, superb extension, and room-shaking output ensure a compelling music and home theater experience.

Advanced-technology inverted surround woofers pair a powerful magnet structure with a rigid, lightweight diaphragm, and powerful amplifiers to deliver huge excursion and sound output while perfectly preserving the most subtle bass details. RCA, XLR, speaker level, and wireless signal connectivity offer the most flexible array of input options available today. Putting control in the listener's hands, iOS and Android subwoofer control apps allow precise configuration of subwoofer settings while industry leading Anthem Room Correction (ARC) guarantees an accurate bass performance custom tailored to each unique listening room.



Dynamo 400



Dynamo 600X



Dynamo 800X



Dynamo 1100X



Dynamo 1600X



### OPTIONAL SWT-X WIRELESS INPUT

Dynamo 600X, 800X, 1100X, and 1600X include a connection port for an optional wireless system. The SWT-X Wireless Subwoofer System (sold separately) incorporates the latest in wireless audio transmission technology, including 2.4GHz dynamic frequency selection, forward error correction, and a range up to 50 feet. Easy to install in the subwoofer, the SWT-X receiver requires no external power source or audio connections.



### HIGH-EXCURSION, LOW-TURBULENCE, INVERTED SURROUND WOOFERS

Dynamo subwoofers feature advanced-design woofers with inverted surrounds and powerful magnet, motor, and suspension designs. High-power magnet structures (significantly more robust than previous generations) pair with low-mass diaphragms to provide massive excursions while perfectly preserving the tiniest bass detail.



### BUILT-IN ETC (ENERGY TRANSFER COUPLER) SPIKES

Dynamo 800X, 1100X, and 1600X come with custom ETC spikes which can be used to enhance stability on thick carpets, or create tighter coupling between subwoofer and floor to enhance overall sound quality. The built-in spikes are conveniently and discretely hidden underneath the rubber feet.



### **UNIQUE FRONT-FIRING OR DOWN-FIRING DESIGN**

When placed inside of a cabinet or other discreet location, *Dynamo 800X*, *1100X*, and *1600X* subwoofers can easily convert from standard down-firing to front-firing orientation. A grille is provided for use in front-firing applications.







## MARTINLOGAN SUBWOOFER CONTROL APP

Available for iOS & Android



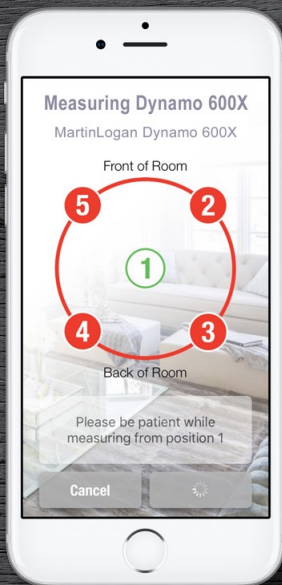
The MartinLogan Subwoofer Control app uses a Bluetooth connection to simplify setup and configuration of *Dynamo 600X*, *800X*, *1100X*, and *1600X*. App based controls include volume level, low-pass filter (frequency and order), phase, 20–30Hz level, three preset listening modes, and a tone sweep feature.

## ARC))) ANTHEM<sup>®</sup> ROOM CORRECTION

Available for PC, iOS, & Android



The unique size and shape of a listening space (and its contents) can make bass waves do unpredictable things, greatly affecting a subwoofer's performance. Anthem Room Correction (ARC) measures low-frequency sound output in a room and compares it to optimal response curves that account for spatial anomalies. ARC effectively removes anomalies, leaving only the ideal standard—realistically blended, natural-sounding bass. *Dynamo 600X*, *800X*, *1100X*, and *1600X* utilize a Bluetooth connection with a smart phone or USB to PC connection to run ARC.



Designed for exceptional performance in music and home theater applications, Dynamo subwoofer systems offer an extremely comprehensive array of connections.

## LEFT AND RIGHT 2-CHANNEL INPUTS

All five new Dynamo subwoofers feature left and right input via RCA line level and speaker level connections.

## LFE HOME THEATER INPUT

*Dynamo 400* and *600X*'s right input doubles as an LFE input for home theater applications. *Dynamo 800X* ups the ante by adding a discrete LFE RCA line level input. *Dynamo 1100X* and *1600X* go one step further by adding both XLR and RCA inputs for LFE connection.

## 12V TRIGGER INPUT

*Dynamo 800X*, *1100X*, and *1600X* feature 12V Trigger Inputs, allowing an external device to turn the subwoofer on/off.

## SIMULTANEOUS LFE AND 2-CHANNEL CONNECTIONS

Robust connection and control systems found in the *Dynamo 800X*, *1100X*, and *1600X* allow simultaneous connection of both 2-channel stereo music and multi-channel home theater and allows each source to have individual crossover and level settings. LFE inputs use no low-pass filter, leaving crossover control to the processor. Left and right inputs integrate discrete user-adjustable low-pass filters allowing different level and crossover points when playing back two channel music.





# *ElectroMotion® Architectural Series Overview*



*The all new ElectroMotion® Architectural Series features our award-winning compact Folded Motion™ thin film transducer technology, bringing a new standard in acoustical performance to in-wall and in-ceiling applications.*

Designed for those seeking the world's most articulate and dynamic multi-channel home theater systems, or simply a stealthy 2-channel system, the Architectural Series speakers are voice and timbre matched with one another, as well as the rest of the MartinLogan line of ultra-premium electrostatic and Folded Motion speakers.

MartinLogan's exquisite Folded Motion tweeter boasts a radiating surface 8-times larger than a typical 1" dome tweeter. The Folded Motion Tweeter works by moving air (which creates sound) perpendicular to the folded ridges of the diaphragm, similar to how an accordion works.



This extremely low mass diaphragm "squeezes" air and requires almost 90% less excursion than the typical 1" dome tweeter, which drastically minimizes distortion while providing a lightning fast response time. The increased surface area also provides a wide, yet controlled sound dispersion to create a realistic and carefully etched sound stage.

All models feature an ultra-low profile, micro perforated grille with no visible bezel, which are also paintable for a near invisible integration into any wall or ceiling. A magnetic system secures grilles easily into place, reducing the risk of warping or damage during installation.

# EM-IC

## SPECIFICATIONS

### Frequency Response

47–25kHz ±3dB

### Horizontal Dispersion

80°

### Vertical Dispersion

80°

### Sensitivity

90 dB/2.83 volts/meter

### Nominal Impedance

4 Ohms. Compatible with 4, 6 or 8 ohm rated amplifiers.

### Recommended Amplifier Power

20-200 watts per channel

### Crossover Frequency

2,600 Hz

### High Frequency Transducer

1" x 1.4" (2.6cm x 3.6cm) Folded Motion Transducer with 5.25" x 1.75" (13.3cm x 4.4cm) diaphragm.

### Low Frequency Driver

6.5" (16.5cm) aluminum cone with cast aluminum basket. Concave dust cap.

### Weight

5lbs. (2.3kg) each

### Overall Dimensions

9.1" (23.1cm) Diameter

5.325" (13.5cm) Depth

### Cut-Out Dimensions

8.2" (20.8cm) Diameter

### Depth Required Behind Wall Surface

5.2" (13.2cm)

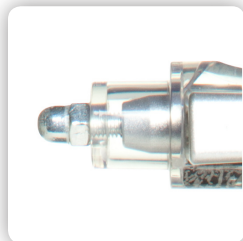
### Projection From Wall Surface

.125" (.3cm)

*Specifications are subject to change without notice.*



The EM-IC is a premium high-performance in-ceiling speaker that uses a 6.5-inch aluminum cone woofer and angled Folded Motion™ tweeter. The speaker is rotatable to aim sound.



A robust mounting-lock system allows quick, trouble-free installation. When not in use, the constant-control mounting locks are held securely within a self-contained housing. When moved into place during installation, they couple the speaker's chassis firmly to the ceiling. And if the speaker is ever removed, the locks retract and latch themselves back in their housings.

Installers rejoice as the Folded Motion tweeter is mounted at an angle, allowing the entire speaker to rotate to aim sound precisely where you want it.

### Precision-Built, Advanced-Topology Vojtko™ Crossover

Carefully hand-built using only the finest polyester capacitors and air-core coils, the crossover employs Martin Logan's proprietary Vojtko topology for vanishingly low distortion and seamless driver integration. This precision-tuned network preserves even the most microscopic sonic nuances while handling the full dynamics of any source.



# EM-R

## SPECIFICATIONS

### Frequency Response

37-25kHz ±3dB

### Horizontal Dispersion

80°

### Vertical Dispersion

80°

### Sensitivity

92 dB/2.83 volts/meter

### Nominal Impedance

4 Ohms. Compatible with 4, 6 or 8 ohm rated amplifiers.

### Recommended Amplifier Power

20-300 watts per channel

### Crossover Frequency

2,600 Hz

### High Frequency Transducer

1" x 1.4" (2.6cm x 3.6cm) Folded Motion Transducer with 5.25" x 1.75" (13.3cm x 4.4cm) diaphragm.

### Low Frequency Driver

8" (20.3cm) aluminum cone with cast aluminum basket. Concave dust cap.

### Weight

8lbs. (3.63kg) each

### Overall Dimensions

11.5" (29.3cm) Diameter

6" (15.2cm) Depth

### Cut-Out Dimensions

10.5" (26.7cm) Diameter

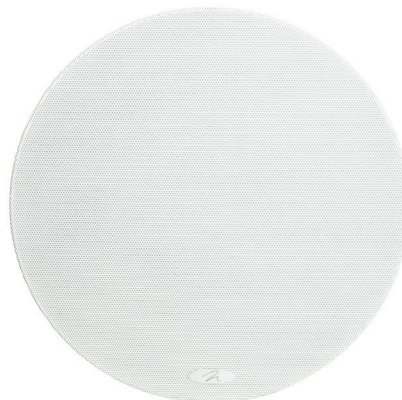
### Depth Required Behind Wall Surface

5.9" (15cm)

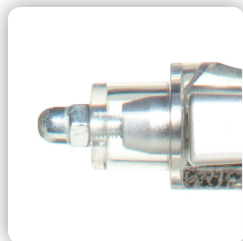
### Projection From Wall Surface

.125" (.3cm)

Specifications are subject to change without notice.



The EM-R is a premium high-performance in-ceiling speaker that uses a larger 8-inch aluminum woofer and angled Folded Motion™ tweeter for ultimate-performance in-ceiling applications. The speaker is rotatable to aim sound.



A robust mounting-lock system allows quick, trouble-free installation. When not in use, the constant-control mounting locks are held securely within a self-contained housing. When moved into place during installation, they couple the speaker's chassis firmly to the ceiling. And if the speaker is ever removed, the locks retract and latch themselves back in their housings.

Installers rejoice as the Folded Motion tweeter is mounted at an angle, allowing the entire speaker to rotate to aim sound precisely where you want it.

### Precision-Built, Advanced-Topology Vojtko™ Crossover

Carefully hand-built using only the finest polyester capacitors and air-core coils, the crossover employs Martin Logan's proprietary Vojtko topology for vanishingly low distortion and seamless driver integration. This precision-tuned network preserves even the most microscopic sonic nuances while handling the full dynamics of any source.

# EM-IW

## SPECIFICATIONS

### Frequency Response

47–25kHz ±3dB

### Horizontal Dispersion

80°

### Vertical Dispersion

80°

### Sensitivity

90 dB/2.83 volts/meter

### Nominal Impedance

4 Ohms. Compatible with 4, 6 or 8 ohm rated amplifiers.

### Recommended Amplifier Power

20-200 watts per channel

### Crossover Frequency

2,500 Hz

### High Frequency Transducer

1" x 1.4" (2.6cm x 3.6cm) Folded Motion Transducer with 5.25" x 1.75" (13.3cm x 4.4cm) diaphragm.

### Low Frequency Driver

6.5" (16.5cm) aluminum cone with cast aluminum basket. Concave dust cap.

### Weight

5.5lbs. (2.5kg) each

### Overall Dimensions

11" (27.9cm) Height

8.5" (21.6cm) Width

3.925" (10cm) Depth

### Cut-Out Dimensions

10.25" (26cm) Height

7.875" (20cm) Width

### Depth Required Behind Wall Surface

3.8" (9.7cm)

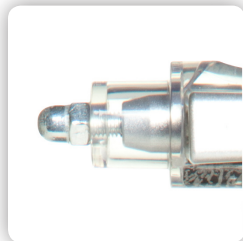
### Projection From Wall Surface

.125" (.3cm)

*Specifications are subject to change without notice.*



The EM-IW features our exotic Folded Motion™ tweeter and a 6.5-inch aluminum cone woofer with cast aluminum basket that provides powerful low-frequency bass extension.



A robust mounting-lock system allows quick, trouble-free installation. When not in use, the constant-control mounting locks are held securely within a self-contained housing. When moved into place during installation, they couple the speaker's chassis firmly to the ceiling. And if the speaker is ever removed, the locks retract and latch themselves back in their housings.

Installers rejoice as the Folded Motion tweeter is mounted at an angle, allowing the entire speaker to rotate to aim sound precisely where you want it.

### Precision-Built, Advanced-Topology Vojtko™ Crossover

Carefully hand-built using only the finest polyester capacitors and air-core coils, the crossover employs MartinLogan's proprietary Vojtko topology for vanishingly low distortion and seamless driver integration. This precision-tuned network preserves even the most microscopic sonic nuances while handling the full dynamics of any source.

# *Stealth Architectural Series* Overview



*Stealth Series is the pinnacle of discreet high-performance audio featuring our most ambitious architectural speakers to date for the ultimate in-wall or in-ceiling reference: the Axis, Edge & Vanquish.*

Designed for those seeking the world's most articulate and dynamic multi-channel home theater systems or a stealthy reference-quality 2-channel system, Stealth Series speakers are voice and timbre-matched with MartinLogan's ultra-premium electrostatic speakers.

MartinLogan's exquisite Folded Motion™ XT tweeter, with its large radiating surface, works by moving air perpendicular to the folded ridges of the diaphragm, similar to how an accordion works. This extremely low mass diaphragm "squeezes" air, requiring almost 90% less excursion than a typical 1" dome tweeter. This drastically minimizes distortion while providing lightning-fast transient response. The increased surface area also delivers wide, yet controlled dispersion ensuring a breathtakingly realistic and delicately etched soundstage.

Premium wire connections, a gloss piano-black speaker baffle (that hides all mounting hardware), solid one-piece cast aluminum chassis and low-profile bezel-less magnetic grilles put the new Stealth Series in a class of its own.



# Vanquish

## SPECIFICATIONS

**Frequency Response**  
37–25,000 Hz ± 3 dB

**Dispersion**  
80° x 30°

**High Frequency Driver**  
1.25" x 2.4" (3.2cm x 6.1cm) Folded Motion XT Transducer with 4.5" x 2.75" (11.4cm x 7cm) diaphragm.

**Mid Frequency Transducer**  
Two 3.5" (8.9cm) aluminum cone with stamped steel basket. Concave dust cap.

**Low Frequency Transducer**  
8" (20.3cm) aluminum cone with cast aluminum basket. Concave dust cap.

**Sensitivity**  
93 dB @ 2.83 volts/ meter

**Impedance**  
4 Ohms. Compatible with 4, 6 or 8 Ohm rated amplifiers.

**Recommended Amplifier Power**  
20–300 watts

**Crossover Frequency**  
400, 850 & 2000 Hz

**Weight**  
16 lbs. (7.3 kg)

**Dimensions**  
14.4" x 6.3"  
(36.5cm x 16cm)

**Cut-Out Dimensions**  
13.1" (33.3cm)

**Depth Required Behind Wall Surface**  
6.1" (15.5cm)

**Projection From Wall Surface**  
0.2" (0.6cm)

*Specifications are subject to change without notice.*



Vanquish is the ultimate reference in-ceiling speaker for left/right/center or surround channel applications. Massive bass performance comes from the 8-inch black aluminum cone woofer while two 3.5-inch black aluminum mid-woofers and a low-distortion Folded Motion™ XT tweeter give it richly detailed highs, and an open & revealing midrange.



Vanquish's robust mounting-lock system is coupled with a rigid aluminum chassis. When not in use, the constant-control mounting locks are held securely within a self-contained housing. When moved into place during installation, they couple the chassis firmly to the ceiling. If the speaker is removed, the locks retract and latch themselves back in their housings. Installers rejoice! Each Vanquish comes with a one-handed installer's handle (shown left) to easily hold during installation. Left/Center/Right/Surround toggle switches allow performance to be tailored to match the specific application post-installation. Chassis can be rotated allowing tweeter to be precisely pointed at the listening area.



### Precision-Built, Advanced-Topology Vojtko™ Crossover

Vojtko crossover topology ensures astonishingly low distortion and seamless driver integration. Each crossover is hand-built on a super-thick, double-layered black PC board using the finest polypropylene and low-DF electrolytic capacitors, massive air coils, custom wound inductors and 16-gauge copper wire, with thermal and current protection. Every note and nuance of the audio signal is perfectly preserved.

# Axis

## SPECIFICATIONS

### Frequency Response

45–25,000 Hz ± 3 dB

### Dispersion

80° x 30°

### High Frequency Driver

1.25" x 2.4" (3.2cm x 6.1cm) Folded Motion XT Transducer with 4.5" x 2.75" (11.4cm x 7cm) diaphragm.

### Low Frequency Transducer

Two 5.25" (13.4cm) aluminum cone with cast aluminum basket. Concave dust cap.

### Sensitivity

94 dB @ 2.83 volts/ meter

### Impedance

4 Ohms. Compatible with 4, 6 or 8 Ohm rated amplifiers.

### Recommended Amplifier Power

20–250 watts

### Crossover Frequency

700 & 2000 Hz

### Weight

13 lbs. (5.9 kg)

### Dimensions

15.2" x 7.8" x 3.9"  
(38.6cm x 19.9cm x 9.9cm)

### Cut-Out Dimensions

14.4" x 7.1" (36.7cm x 18cm)

### Depth Required Behind Wall Surface

3.7" (9.4cm)

### Projection From Wall Surface

0.2" (0.6cm)

*Specifications are subject to change without notice.*



Axis offers ultra-high-performance from an in-wall and is sized to fit horizontally between 16" studs for the ultimate center channel or left/right application. Two 5.25-inch black aluminum cone woofers and a low-distortion Folded Motion™ XT tweeter provide richly detailed highs, and an open & revealing midrange.



Axis' robust mounting-lock system is coupled with a solid aluminum chassis. When not in use, the constant-control mounting locks are held securely within a self-contained housing. When moved into place during installation, they couple the chassis and add rigidity to the wall. Driver complements are held in place by a flush-mounted 3/4-inch solid high-gloss piano black baffle that hides mounting hardware for customers who want to showcase their speaker without a grille. The Folded Motion Tweeter rotates easily without the need for tools to allow precise sound dispersion either horizontally or vertically and can be performed post-installation.



### Precision-Built, Advanced-Topology Vojtko™ Crossover

Vojtko crossover topology ensures vanishingly low distortion and seamless driver integration. Each crossover is hand-built on a super-thick, double-layered PC board using the finest polypropylene and low-DF electrolytic capacitors, massive air coils, custom wound inductors and 16-gauge copper wire, with thermal and current protection. Every note and nuance of the audio signal is perfectly preserved.

# Edge

## SPECIFICATIONS

**Frequency Response**  
42–25,000 Hz ± 3 dB

**Dispersion**  
80° x 30°

**High Frequency Driver**  
1.25" x 2.4" (3.2cm x 6.1cm) Folded Motion XT Transducer with 4.5" x 2.75" (11.4cm x 7cm) diaphragm.

**Mid Frequency Transducer**  
Two 3.5" (8.9cm) aluminum cone with stamped steel basket. Concave dust cap.

**Low Frequency Transducer**  
Two 6.5" (16.5cm) aluminum cone with cast aluminum basket. Concave dust cap.

**Sensitivity**  
95 dB @ 2.83 volts/ meter

**Impedance**  
4 Ohms. Compatible with 4, 6 or 8 Ohm rated amplifiers.

**Recommended Amplifier Power**  
20–300 watts

**Crossover Frequency**  
400, 1800 & 3000 Hz

**Weight**  
19 lbs. (8.62 kg)

**Dimensions**  
27.8" x 8.3" x 3.9"  
(70.5cm x 21cm x 9.9cm)

**Cut-Out Dimensions**  
27" x 7.6" (68.6cm x 19.2cm)

**Depth Required Behind Wall Surface**  
3.7" (9.4cm)

**Projection From Wall Surface**  
0.2" (0.6cm)

*Specifications are subject to change without notice.*



Edge is the ultimate reference in-wall speaker for front, center or surround applications. Two 6.5-inch black aluminum cone woofers, two 3.5-inch black aluminum mid-woofers and a low-distortion Folded Motion™ XT tweeter provide deep bass, richly detailed highs, and an open & revealing midrange.



Edge's robust mounting-lock system is coupled with a solid aluminum chassis. When not in use, the constant-control mounting locks are held securely within a self-contained housing. When moved into place during installation, they couple the chassis and add rigidity to the wall. Driver complements are held in place by a flush-mounted 3/4-inch solid high-gloss piano black baffle that hides mounting hardware for customers who want to showcase their speaker without a grille. The Folded Motion Tweeter rotates easily without the need for tools to allow precise sound dispersion either horizontally or vertically and can be performed post-installation.

### Precision-Built, Advanced-Topology Vojtko™ Crossover

Vojtko crossover topology ensures vanishingly low distortion and seamless driver integration. Each crossover is hand-built on a super-thick, double-layered black PC board using the finest polypropylene and low-DF electrolytic capacitors, massive air coils, custom wound inductors and 16-gauge copper wire, with thermal and current protection. Every note and nuance of the audio signal is perfectly preserved.

# Cadence & Verse

Powered Home Theater Soundbars



Above Television



Below Television



Table Top



**Featuring the latest in audio streaming technologies,** MartinLogan's Cadence and Verse soundbars perfectly complement flat screen televisions measuring 50-inches and larger. Their low-profile design is ideal for tabletop placement or wall-mounting. Nine full-range drivers and nine-channels of amplification, combined with Anthem Room Correction (ARC™) technology, advanced digital signal processing, and industry leading Dolby Digital and DTS Digital Surround decoding reproduces multi-channel recordings with unflinching accuracy, resolution, and detail—delivering exceptionally deep, well-balanced bass and an immersive home theater surround sound experience in a sleek, easy to operate system. Robust connectivity options include Bluetooth wireless, digital optical, and analog RCA inputs, as well as support for external subwoofers. Cadence adds premium features, including an array of HDMI input and output options as well as DTS Play-Fi® and Apple® Airplay wireless streaming functionality. Perched at the forefront of soundbar technology, Cadence and Verse effortlessly deliver truth in sound.



\*Specifications are subject to change without notice.

# Cadence™

## System Frequency Response

65–20,000 Hz (± 2 dB 1/3 octave smoothing on channel axis)

## Amplifier Power

135 Watts (270 Watts peak) combined total output across 9 amplifiers.

## Full-Range Drivers

Nine 2.5" (6.4cm) high excursion composite cone. Non-resonant asymmetrical chamber format.

## Room Correction

Anthem Room Correction (ARC) with included calibrated microphone

## Cabinet

Sealed

## Components

DSP based preamplifier

## Decoding

Dolby® Digital, DTS Digital Surround™

## Inputs

(3x) HDMI, (2x) Optical SPDIF (digital optical), (2x) Analog stereo RCA, WiFi, Bluetooth, Ethernet

## Outputs

HDMI ARC Out, (1x) Subwoofer Out via analog RCA, IR repeater

## Wireless Connectivity

2.4 GHz and 5.0 GHz; 802.11 a/b/g/n

## Wireless Input

Apple AirPlay, DTS Play-Fi®, Bluetooth

## Wireless Subwoofer Output

Built-in SWT-SB Subwoofer Wireless Transmitter

## AC Adaptor (SWT-SB Receiver)

Input: AC 100–240V, 50/60Hz  
Output: DC 9V, 0.5A

## Power Draw

Max: 180 Watts, Standby: <0.5 Watts

## Remote Battery

(2x) AAA

## Weight

12.7 lbs. (5.4 kg)

## Dimensions (H x W x D), Table Mount

3.5" x 46.1" x 5" (8.9cm x 117cm x 12.7cm)

## Dimensions (H x W x D), Wall Mount

5" x 46.1" x 3.9" (12.7cm x 117cm x 9.9cm)

## Weight

12.7 lbs. each (5.4 kg)

## Size (H x W x D)

61.5 x 13.4 x 27.5-inch (156.1 cm x 33.9 cm x 69.9 cm)

## Accessories (included)

Remote Control and Batteries, ARC™ Microphone and USB Cable, SWT-SB Subwoofer Wireless Receiver and Power Adapter, Wall Bracket and Shoulder Bolts, IR Emitter, Power Cord



# Verse™

## System Frequency Response

65–20,000 Hz (± 2 dB 1/3 octave smoothing on channel axis)

## Amplifier Power

135 Watts (270 Watts peak) combined total output across 9 amplifiers.

## Full-Range Drivers

Nine 2.5" (6.4cm) high excursion composite cone. Non-resonant asymmetrical chamber format.

## Room Correction

Anthem Room Correction (ARC) with included calibrated microphone

## Cabinet

Sealed

## Components

DSP based preamplifier

## Decoding

Dolby® Digital, DTS Digital Surround™

## Inputs

Optical SPDIF (digital optical), (2x) Analog stereo RCA, Bluetooth

## Outputs

(1x) Subwoofer Out via analog RCA, IR repeater

## Wireless Connectivity

n/a

## Wireless Input

Bluetooth

## Wireless Subwoofer Output

Built-in SWT-SB Subwoofer Wireless Transmitter

## AC Adaptor (SWT-SB Receiver)

Input: AC 100–240V, 50/60Hz  
Output: DC 9V, 0.5A

## Power Draw

Max: 180 Watts, Standby: <0.5 Watts

## Remote Battery

(2x) AAA

## Weight

12.7 lbs. (5.4 kg)

## Dimensions (H x W x D), Table Mount

3.5" x 46.1" x 5" (8.9cm x 117cm x 12.7cm)

## Dimensions (H x W x D), Wall Mount

5" x 46.1" x 3.9" (12.7cm x 117cm x 9.9cm)

## Weight

12.7 lbs. each (5.4 kg)

## Size (H x W x D)

61.5 x 13.4 x 27.5-inch (156.1 cm x 33.9 cm x 69.9 cm)

## Accessories (included)

Remote Control and Batteries, ARC™ Microphone and USB Cable, SWT-SB Subwoofer Wireless Receiver and Power Adapter, Wall Bracket and Shoulder Bolts, IR Emitter, Power Cord



# Motion Vision X

## SPECIFICATIONS

### Frequency Response

43–23,000 Hz ± 3 dB

### High Frequency Driver

Three 1" x 1.4" (2.6cm x 3.6cm)  
Folded Motion Transducers with  
5.25" x 1.75" (13.3cm x 4.4cm) diaphragm.

### Low Frequency Drivers

Four 4" (10.2cm) fiber cones with extended throw  
drive assembly. Non-resonant asymmetrical chamber  
format.

### Amplifier Power

100 Watts (200 Watts peak) combined total.  
output across 7 amps.

### Components & Decoding

DSP based preamplifier  
Dolby® Digital, DTS Digital Surround™

### Crossover Frequency

3,000 Hz

### Inputs

(1x) Optical SPDIF (digital optical), (1x) Coax  
SPDIF (digital coaxial), (1x) Analog 3.5 mm,  
(1x) Ethernet

### Outputs

(1x) Subwoofer Out via analog RCA

### Controls

Top mounted controls and included remote control.

### Remote Battery

(2x) AAA

### Wireless Output

Built-in SWT-2 Subwoofer Wireless Transmitter  
compatible with select MartinLogan subwoofers.

### Wireless Connectivity

2.4GHz and 5.0GHz; 802.11 g/n

### Cabinet

Ported

### Weight

20.5 lbs. (9.3 kg)

### Dimensions

5" x 39.9" x 5.85"  
(12.7cm x 101.3cm x 14.8cm)

Specifications are subject to change without notice.



**NEW!**  
Extruded aluminum  
remote control



**Wireless Streaming.** 5-channel surround sound from an all in-one soundbar that also lets you stream music wirelessly. New DTS Play-Fi™ technology lets you effortlessly stream from your Android, iOS, Kindle Fire or PC devices. Just download the free app and stream music to one or multiple Vision X soundbars.



We engineered the Motion Vision X with a commanding bass performance paired with precisely crafted mid- and high-frequencies, creating a vivid, three-dimensional soundstage. Front left/right and center channels use three advanced-resolution Folded Motion™ tweeters, four high-performance woofers and seven dedicated amplifiers to deliver 100 watts of total system power that also simulates the rear left/right effects channels to create a fully immersive, five-channel surround sound throughout the listening environment.

Dual rear-firing bass ports reinforce the bass extension for astonishingly deep bass, and for bass aficionados who desire the deepest bass experience, the built-in SWT-2 transmitter allows the addition of a compatible wireless MartinLogan subwoofer.

### Hassle-Free Setup & Simple Controls

Motion Vision X includes a robust, redesigned mounting bracket that's even less obtrusive than the previous design. Plus, we've designed a new remote control which puts even greater functionality at your fingertips. The top-mounted control center is composed of brushed stainless steel and provides convenient access to all features/functions.





## OUTDOOR LIVING SERIES

### **SUPERB MARTINLOGAN SOUND IN THE GREAT OUTDOORS.**

Landscaping and outdoor living spaces are about more than just adding beauty to your home. They create a distinctive space that brings people together in an inviting, comfortable environment. They are a place to share exceptional food and drinks with your family and closest friends. As much as carefully chosen adornments enhance the visual appeal and enjoyment of the scenery, compelling music from high-performance speakers enhances the ambience. MartinLogan's Outdoor Living system brings unmatched audio quality to the music in your outdoor living space. Designed to maximize installation flexibility while offering scalable system solutions, MartinLogan's Outdoor Living Series includes high-performance weatherproof satellite speakers with 4- and 6-inch woofers, subterranean subwoofers with 10- and 12-inch woofers, and a selection of mounting accessories. One bundled package, the 4.1 Outdoor Living System, makes getting started with a world-class outdoor audio experience simple.

### **QUICK SPECS**

- Dark Bronze finish
- All-weather design

### **SATELLITE QUICK SPECS**

- Aluminum tweeters and poly cone woofers
- 70V / 100V / 8-Ohm
- ABS cabinet with high UV-stability
- Off season speaker covers

### **SUBWOOFER QUICK SPECS**

- Poly cone woofers
- 8-Ohm
- Subterranean design





## OUTDOOR SAT 40

- System Frequency Response**  
120–20,000 Hz ±3 dB
- Recommended Amplifier Power**  
15–120 Watts
- Maximum Input Power**  
60 Watts
- Sensitivity (room / anechoic)**  
87 dB / 83 dB
- Impedance**  
Compatible with 8 ohms
- Crossover Frequency**  
2,500 Hz
- High Frequency Driver**  
0.75" (1.9cm) aluminum dome, ferro-fluid cooled tweeter
- Mid-Range Driver/Woofer**  
4" (10cm) mineral filled poly cone
- Controls**  
Input: 8-Ohm, 70 Volt (3.75W, 7.5W, 15W, or 30W), 100 Volt (7.5W, 15W, or 30W)
- Finish**  
Dark Bronze
- Accessories (included)**  
Off season speaker cover
- Weight**  
5 lbs. each (2.3 kg)
- Size (H x W x D, without stem)**  
6" x 6" x 10" (15.2 x 15.2 x 25.4 cm)
- Size (H x W x D, with stem)**  
10.6" x 6" x 10" (27 x 15.3 x 25.4 cm)

### Finish Options:

Dark Bronze

### Satellite Mounting Accessories (sold separately):



Surface Mount Bracket



12-inch Ground Stake



Burial Conduit Box

## OUTDOOR SAT 60

- System Frequency Response**  
90–20,000 Hz ±3 dB
- Recommended Amplifier Power**  
15–120 Watts
- Maximum Input Power**  
80 Watts
- Sensitivity (room / anechoic)**  
92 dB / 88 dB
- Impedance**  
Compatible with 8 ohms
- Crossover Frequency**  
2,500 Hz
- High Frequency Driver**  
0.75" (1.9cm) aluminum dome, ferro-fluid cooled tweeter
- Mid-Range Driver/Woofer**  
6" (15.25cm) mineral filled poly cone
- Controls**  
Input: 8-Ohm, 70 Volt (3.75W, 7.5W, 15W, or 30W), 100 Volt (7.5W, 15W, or 30W)
- Finish**  
Dark Bronze
- Accessories (included)**  
Off season speaker cover
- Weight**  
6.5 lbs. each (3 kg)
- Size (H x W x D, without stem)**  
8.3" x 8.3" x 11.3" (21 x 21 x 28.6 cm)
- Size (H x W x D, with stem)**  
12.8" x 8.3" x 11.3" (32.5 x 21 x 28.6 cm)

### Recommended Amplifier:

Optimized for use with the Crown CDi 1000 amplifier which can be programmed with customized DSP settings. 8 ohm amplifiers can also be used.

## DYNAMO™ OUTDOOR SUB 100

- System Frequency Response**  
33–135 Hz ±3 dB
- Recommended Amplifier Power**  
15–1,000 Watts
- Maximum Input Power**  
400 Watts
- Sensitivity (room / anechoic)**  
88 dB / 82 dB
- Impedance**  
8 ohms
- Woofer**  
10" (25.4cm) mineral filled poly cone, 2" (5cm) high-power oversized voice coil, 4-layer on fiberglass bobbin
- Finish**  
Dark Bronze (canopy)
- Weight**  
48 lbs. each (21.8 kg)
- Size (H x W x D, barrel only)**  
9.8" x 15.8" x 15.8" (24.9 x 40 x 40 cm)
- Size (H x W x D, canopy)**  
6.1" x 10.3" x 10.3" (15.6 x 26.1 x 26.1 cm)
- Size (H x W x D, barrel, pipe, and canopy)**  
23.6" x 15.8" x 18" (60 x 40 x 45.7 cm)

## DYNAMO™ OUTDOOR SUB 120

- System Frequency Response**  
28–120 Hz ±3 dB
- Recommended Amplifier Power**  
15–1,000 Watts
- Maximum Input Power**  
500 Watts
- Sensitivity (room / anechoic)**  
91 dB / 85 dB
- Impedance**  
8 ohms
- Woofer**  
12" (30.5cm) mineral filled poly cone, 2.5" (6.4cm) high-power oversized voice coil, 4-layer on fiberglass bobbin
- Finish**  
Dark Bronze (canopy)
- Weight**  
62 lbs. each (28.1 kg)
- Size (H x W x D, barrel only)**  
15.8" x 15.8" x 20.1" (40 x 40 x 51 cm)
- Size (H x W x D, canopy)**  
8.6" x 14.3" x 14.3" (21.8 x 36.2 x 36.2 cm)
- Size (H x W x D, barrel, pipe, and canopy)**  
34.5" x 15.8" x 34.8" (87.6 x 40 x 88.3 cm)

Specifications are subject to change without notice.

## 4.1 OUTDOOR LIVING SYSTEM

- Contains**
- 4x Outdoor Sat 40
- 1x Dynamo Outdoor Sub 100
- 4x 12-inch Ground Stake





# ML-45AW

## SPECIFICATIONS

### Frequency Response

90–20,000 Hz  $\pm 2$  dB

### Crossover Frequency

2,300 Hz

### Sensitivity

88dB

### Impedance

Compatible with 8 ohms

### Low-Frequency Extension\*

65 Hz (DIN)

### High-Frequency Driver

1" (2.5cm) titanium dome

### Low-Frequency Driver

4-1/2" (11.5cm) mineral-filled polypropylene cone

### Binding Post Inputs

5-way binding posts accommodate wire up to 5AWG

### Suitable Amplifier Range

15–80 Watts

### Maximum Power Handling\*\*

50 Watts

### Weight

3.4 lbs. each (1.55 kg)

### Size (H x W x D)

7-9/16" x 5-5/8" x 5-15/16"  
(19.2 x 14.3 x 15.1cm)

\*DIN 45 500. Indicates -3 dB in a typical listening room.

\*\*With typical program source, provided the amplifier clips no more than 10% of the time.

Specifications are subject to change without notice.

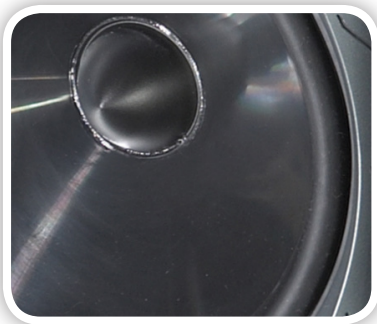
### Colors Options:



Black



White



### Affordable High-Performance Solutions

Installer Series is our affordable high-performance lineup, featuring custom installation solutions for in-wall, in-ceiling, and outdoor applications.



Titanium dome tweeters and mineral-filled polypropylene drivers ensure great performance, while fully sealed, mineral-filled reinforced enclosures provide protection from harsh weather elements. All models have water & UV-resistant aluminum grilles, stainless steel & polymer mounting brackets, brass hardware, and gold-plated binding posts for superior toughness.

# ML-55AW

## SPECIFICATIONS

### Frequency Response

85–20,000 Hz  $\pm 2$  dB

### Crossover Frequency

2,300 Hz

### Sensitivity

90dB

### Aiming

Swivels on U-Bracket

### Impedance

Compatible with 8 ohms

### Low-Frequency Extension\*

60 Hz (DIN)

### High-Frequency Driver

1" (2.5cm) titanium dome

### Low-Frequency Driver

5-1/2" (14cm) mineral-filled polypropylene cone

### Binding Post Inputs

5-way binding posts accommodate wire up to 5AWG

### Suitable Amplifier Range

15–90 Watts

### Maximum Power Handling\*\*

60 Watts

### Weight

6.75 lbs. each (3.05 kg)

### Size (H x W x D)

9-11/16" x 7" x 7-5/8"

(24.6 x 17.8 x 19.4cm)

\*DIN 45 500. Indicates -3 dB in a typical listening room.

\*\*With typical program source, provided the amplifier clips no more than 10% of the time.

Specifications are subject to change without notice.

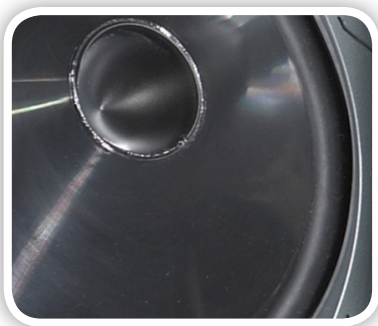
### Colors Options:



Black



White



### Affordable High-Performance Solutions

Installer Series is our affordable high-performance lineup, featuring custom installation solutions for in-wall, in-ceiling, and outdoor applications.

Titanium dome tweeters and mineral-filled polypropylene drivers ensure great performance, while fully sealed, mineral-filled reinforced enclosures provide protection from harsh weather elements. All models have water & UV-resistant aluminum grilles, stainless steel & polymer mounting brackets, brass hardware, and gold-plated binding posts for superior toughness.

# ML-65AW

## SPECIFICATIONS

### Frequency Response

80–20,000 Hz  $\pm 2$  dB

### Crossover Frequency

2,300 Hz

### Sensitivity

91 dB

### Aiming

Swivels on U-Bracket

### Impedance

Compatible with 8 ohms

### Low-Frequency Extension\*

55 Hz (DIN)

### High-Frequency Driver

1" (2.5cm) titanium dome

### Low-Frequency Driver

6-1/2" (16.5cm) mineral-filled polypropylene cone

### Binding Post Inputs

5-way binding posts accommodate wire up to 5AWG

### Suitable Amplifier Range

15–100 Watts

### Maximum Power Handling\*\*

70 Watts

### Weight

8.8 lbs. each (4 kg)

### Size (H x W x D)

11" x 7-1/2" x 7-15/16"

(28 x 19 x 20.2cm)

\*DIN 45 500. Indicates -3 dB in a typical listening room.

\*\*With typical program source, provided the amplifier clips no more than 10% of the time.

Specifications are subject to change without notice.

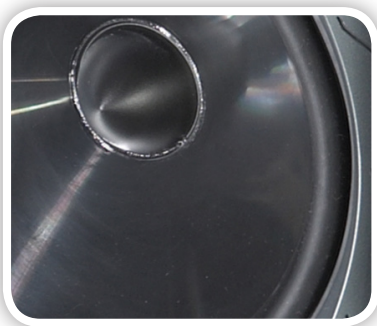
### Colors Options:



Black



White



## Affordable High-Performance Solutions

Installer Series is our affordable high-performance lineup, featuring custom installation solutions for in-wall, in-ceiling, and outdoor applications.

Titanium dome tweeters and mineral-filled polypropylene drivers ensure great performance, while fully sealed, mineral-filled reinforced enclosures provide protection from harsh weather elements. All models have water & UV-resistant aluminum grilles, stainless steel & polymer mounting brackets, brass hardware, and gold-plated binding posts for superior toughness.

# ML-75AW

## SPECIFICATIONS

### Frequency Response

75–20,000 Hz  $\pm 2$  dB

### Crossover Frequency

2,300 Hz

### Sensitivity

93dB

### Aiming

Swivels on U-Bracket

### Impedance

Compatible with 8 ohms

### Low-Frequency Extension\*

50 Hz (DIN)

### High-Frequency Driver

1" (2.5cm) titanium dome

### Low-Frequency Driver

7-1/2" (19cm) mineral-filled polypropylene cone

### Binding Post Inputs

5-way binding posts accommodate wire up to 5AWG

### Suitable Amplifier Range

15–110 Watts

### Maximum Power Handling\*\*

80 Watts

### Weight

10.6 lbs. each (4.8 kg)

### Size (H x W x D)

12-1/2" x 8-13/16" x 9-1/8"

(31.7 x 22.4 x 23.2cm)

\*DIN 45 500. Indicates -3 dB in a typical listening room.

\*\*With typical program source, provided the amplifier clips no more than 10% of the time.

Specifications are subject to change without notice.

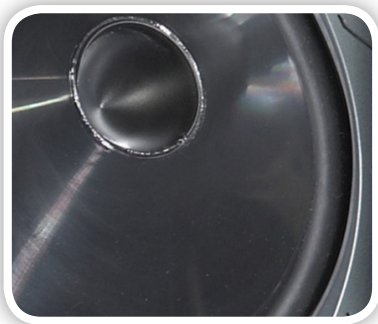
### Colors Options:



Black



White



### Affordable High-Performance Solutions

Installer Series is our affordable high-performance lineup, featuring custom installation solutions for in-wall, in-ceiling, and outdoor applications.

Titanium dome tweeters and mineral-filled polypropylene drivers ensure great performance, while fully sealed, mineral-filled reinforced enclosures provide protection from harsh weather elements. All models have water & UV-resistant aluminum grilles, stainless steel & polymer mounting brackets, brass hardware, and gold-plated binding posts for superior toughness.

# ML-65R (stereo)

## SPECIFICATIONS

### Frequency Response

66–20,000 kHz  $\pm$ 2 dB

### Crossover Frequency

3,000 Hz

### Sensitivity

89dB

### Impedance

Stereo Mode - Compatible with 8 ohms

Mono Mode - Compatible with 4 ohms

### Low-Frequency Extension\*

44 Hz (DIN)

### High-Frequency Drivers

Two 1" (2.5cm) titanium domes

### Low-Frequency Driver

6-1/2" (16.5cm) mineral-filled polypropylene cone with dual voice coil.

### Inputs

Two pair pre-installed wires

### Suitable Amplifier Range

Stereo Mode - 15–100 Watts

Mono Mode - 15–55 Watts

### Maximum Power Handling\*\*

Stereo Mode - 70 Watts

Mono Mode - 35 Watts

### Weight

12.1 lbs. each (5.5 kg)

### Size (H x W x D)

12-3/16" x 11-1/8" x 10-5/8"

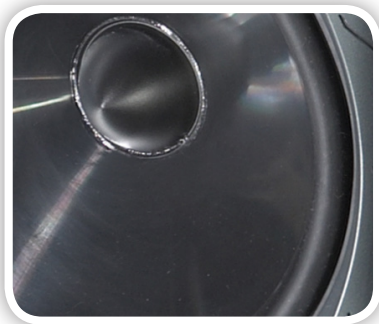
(31 x 28.2 x 27cm)

\*DIN 45 500. Indicates -3 dB in a typical listening room.

\*\*With typical program source, provided the amplifier clips no more than 10% of the time.

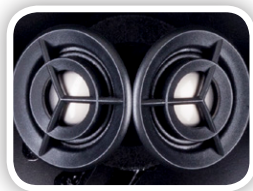
Specifications are subject to change without notice.

Color:  Grey Stone



## Affordable High-Performance Solutions

Installer Series is our affordable high-performance lineup, featuring custom installation solutions for in-wall, in-ceiling, and outdoor applications.



Titanium dome tweeters and mineral-filled polypropylene drivers ensure great performance, while fully sealed, mineral-filled reinforced enclosures with faux-stone finish provide protection from harsh weather elements that will blend into the surrounding landscape. All models have water & UV-resistant stainless steel grilles for superior toughness.

# ML-75R (stereo)

## SPECIFICATIONS

### Frequency Response

63–20,000 kHz  $\pm$ 2 dB

### Crossover Frequency

2,500 Hz

### Sensitivity

90dB

### Impedance

Stereo Mode - Compatible with 8 ohms

Mono Mode - Compatible with 4 ohms

### Low-Frequency Extension\*

42 Hz (DIN)

### High-Frequency Drivers

Two 1" (2.5cm) titanium domes

### Low-Frequency Driver

7-1/2" (19cm) mineral-filled polypropylene cone with dual voice coil.

### Inputs

Two pair pre-installed wires

### Suitable Amplifier Range

Stereo Mode - 15–120 Watts

Mono Mode - 15–60 Watts

### Maximum Power Handling\*\*

Stereo Mode - 80 Watts

Mono Mode - 40 Watts

### Weight

17 lbs. each (7.7 kg)

### Size (H x W x D)

15-3/16" x 13-3/8" x 13"

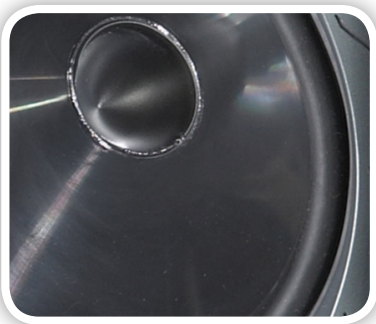
(38.5 x 34 x 33cm)

\*DIN 45 500. Indicates -3 dB in a typical listening room.

\*\*With typical program source, provided the amplifier clips no more than 10% of the time.

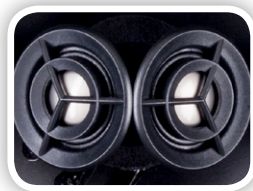
Specifications are subject to change without notice.

Color:  Grey Stone



## Affordable High-Performance Solutions

Installer Series is our affordable high-performance lineup, featuring custom installation solutions for in-wall, in-ceiling, and outdoor applications.



Titanium dome tweeters and mineral-filled polypropylene drivers ensure great performance, while fully sealed, mineral-filled reinforced enclosures with faux-stone finish provide protection from harsh weather elements that will blend into the surrounding landscape. All models have water & UV-resistant stainless steel grilles for superior toughness.

# Bravado

## Wireless Speaker

### SPECIFICATIONS

#### Frequency Response

45–23 kHz ± 2 dB

#### Crossover Frequency

6,000 Hz

#### Amplifier Power

1 x 50 Watts (woofer), 2 x 25 Watts (tweeters).  
100 Watts (200 Watts peak / 400 Watts instantaneous peak) combined total output.

#### High Frequency Drivers

Two 0.94" x 1" (2.4cm x 2.5cm) Folded Motion Transducers with 2.8" x 1.25" (7.1cm x 3.2cm) diaphragm.

#### Low Frequency Driver

5" (12.7cm) aluminum cone with extended throw drive assembly. Non-resonant asymmetrical chamber format.

#### Cabinet

Sealed

#### Components

DSP based preamplifier Class-D amplifier

#### Inputs

Analog 3.5 mm, Ethernet 10/100, AC Power

#### Wireless Inputs

Apple AirPlay®, DTS Play-Fi®

#### Output

Subwoofer Out via Analog RCA

#### Controls

Left / Stereo / Right position switch

#### Wireless Connectivity

2.4 GHz and 5.0 GHz; 802.11 g/n

#### Room Correction

ARC™ (Anthem Room Correction) with included calibrated microphone

#### Power Draw

Max: 170 Watts, Idle: 10 Watts, Standby: 6 Watts

#### Weight

7.5 lbs. each (3.4 kg)

#### Size (H x W x D)

10.12" x 5.6" x 6.8" (25.7cm x 14.2cm x 17.3cm)

Specifications are subject to change without notice.



**Miraculous performance from an unexpected source:** a wireless audio streaming system. The MartinLogan Wireless Ensemble delivers superior audio performance using the best Wi-Fi streaming technology available, DTS Play-Fi®.

This compact single-speaker-stereo bookshelf loudspeaker with ARC Technology delivers dynamic MartinLogan-level performance streaming audio over your home network. Use individually and experience dynamic stereo sound, or use two as a stereo pair. Bravado uses the same advanced loudspeaker technology found in our Motion Series. Lightning fast, low distortion Folded Motion Tweeters and shallow-depth extended-throw woofer cones make the most of high-resolution wireless signals. Processing is achieved with state-of-the-art DSP and high powered on-board Class-D amplification.

Anthem Room Correction (ARC™) Technology is the industry's best user-controlled DSP room tuning innovation. Using advanced DSP software and a calibrated microphone, ARC tunes speaker performance to compensate for your room's unique characteristics, ensuring perfect sound in any listening space.

# Crescendo X

Luxury Wireless Music System



Crescendo X is a luxury wireless speaker featuring Bluetooth®, AirPlay, and whole-home wireless streaming with DTS® Play-F® technology. Under the grill, the Crescendo X includes dual audiophile quality Folded Motion™ tweeters and a 5x7-inch mid/bass woofer for a deep, extended bass response. The Crescendo X is capable of reproducing sound with unflinching accuracy, resolution, and detail—the inspiration behind every MartinLogan design.

Our dedicated in-house design and engineering team created the ultimate table-top speaker system in a sleek, compact design without compromising sound quality. Taking a “no-compromise” approach, the Crescendo features premium construction and design elements not typically found in similar speakers.

### Inspiring Design

MartinLogan has always blended Science with Art, and the Crescendo X is no exception. Designed to fit a modern decor, MartinLogan utilizes high-quality materials and finishes to give Crescendo X a furniture and artwork like appearance. The result is striking.

The dense cabinet enclosure, wrapped in either high-gloss piano black paint or real-wood walnut veneer, floats atop a sturdy aluminum stand and looks comfortably at home in any decor where aesthetics are as important as sound quality. A cleanly integrated, front mounted control panel allows quick access to power, input and volume controls. For across the room control, Crescendo X includes a custom remote control built from black anodized extruded aluminum.

Crescendo X is crafted with a solid MDF enclosure that strengthens and intensifies low-frequency bass performance while minimizing vibrations. To further enhance bass performance, Crescendo X features an optional subwoofer output via an analog RCA connection.





# Crescendo X (cont'd)

## SPECIFICATIONS

### Frequency Response

50–23 kHz  $\pm$  3 dB

### Crossover Frequency

3,600 Hz

### Amplifier Power

1 x 50 Watts (woofer), 2 x 25 Watts (tweeters).  
100 Watts (140 Watts peak) combined total output.

### High Frequency Drivers

Two 0.94" x 1" (2.4cm x 2.5cm) Folded Motion Transducer with 2.8" x 1.25" (7.1cm x 3.2cm) diaphragm.

### Low Frequency Driver

5" x 7" (12.7cm x 17.8cm) fiber cone with extended thro assembly. Non-resonant asymmetrical chamber format.

### Cabinet

Ported

### Components

24-bit 48kHz DSP based preamplifier Class-D amplifie.

### Inputs

USB (iPhone, iPad, iPod digital connection) Auxiliary analog/optical digital (3.5mm mini jack) RJ45 Ethernet

### Wireless Inputs

802.11b/g (2.4GHz). Bluetooth v4.0 (supports AAC, aptX®, MP3, SBC)

### USB Charging Power

2.4 Amp (capable of rapidly charging some devices)

### Output

Subwoofer Out via analog RCA

### Power Draw

Max: 70 Watts, Idle: 6.5 Watts, Standby: < 4 Watts

### Remote Battery

2x AAA

### Weight

15 lbs. each (6.8 kg)

### Size (H x W x D)

8.1" x 25.7" x 6.9"  
(20.5cm x 65.3cm x 17.5cm)

Specifications are subject to change without notice.



### Finish Options:



## Advanced Connectivity

Seven input methods allow Crescendo X to connect to virtually any device:

1. **DTS Play-Fi** – via the DTS-Play Fi app, stream audio from capable devices over a Wi-Fi network (iOS, Android, PC or Kindle Fire).
2. **AirPlay** – connect AirPlay capable devices wirelessly (iPhone, iPad, iPod, or a computer with iTunes) to stream audio.
3. **Bluetooth** – connect Bluetooth capable devices wirelessly to stream audio. Bluetooth V4.0 supports SBC, MP3, AAC, and aptX®.
4. **Wired Ethernet** – audio information can be sent over a LAN to the Crescendo X using various protocols (such as AirPlay or DLNA)
5. **USB** – connect compatible Apple devices and use the Crescendo X as an audio dock and charger. The USB connection was designed to rapidly charge a variety of devices.
6. **Analog** – any device that has an analog audio output can connect to the auxiliary analog input via a 3.5mm headphone style jack.
7. **Optical digital** – any device that has a digital optical output can connect to the auxiliary digital input with the included mini-Toslink optical adapter (analog and digital connections share the same input).

# Unison

## Wireless Pre-amplifier

### SPECIFICATIONS

#### Inputs

Left/Right RCA Analog, Digital Optical (Toslink), Ethernet 10/100, AC Power

#### Wireless Inputs

Apple AirPlay®, DTS Play-Fi®

#### Output

Left/Right RCA Analog, Digital Optical (Toslink), 12V Trigger

#### Wireless Connectivity

2.4 GHz and 5.0 GHz; 802.11 g/n

#### Room Correction

ARC™ (Anthem Room Correction) with included calibrated microphone

#### Weight

1.5 lbs. (0.7 kg)

#### Size (H x W x D)

3.35" x 7.95" x 7.95" (8.5cm x 20.2cm x 20.2cm)

*Specifications are subject to change without notice.*



**Endless variety and limitless choices.** Your personal digital audio library, and your favorite online audio services, are available, wirelessly, anywhere in your home, at the touch of a button, at a level of quality that no other streaming technology can match.



Featuring both digital optical and analog inputs and outputs and a 12-Volt trigger, Unison is a dedicated pre-amplifier designed to add DTS Play-Fi and Apple AirPlay wireless streaming to existing audio/video systems. Source rebroadcast functionality allows an incoming digital or analog source to be rebroadcast to any Play-Fi device in your network—perfect for the vinyl enthusiast. When you experience it, you will agree: high quality, network-adaptable DTS Play-Fi streaming technology is the perfect high performance match for high performance MartinLogan loudspeakers.

Anthem Room Correction (ARC™) Technology is the industry's best user-controlled DSP room tuning innovation. Using advanced DSP software and a calibrated microphone, ARC tunes speaker performance to compensate for your room's unique characteristics, ensuring perfect sound in any listening space.

# Forte

## Wireless Amplifier

### SPECIFICATIONS

#### Amplifier Power

- 2 x 50 Watts per channel into 4 or 8 ohms (20 Hz-20kHz, 0.5%THD)
- 2 x 100 Watts per channel into 4 ohms short term peak
- 2 x 200 Watts per channel instantaneous peak

#### Inputs

Analog 3.5mm, Ethernet 10/100, AC Power

#### Wireless Inputs

Apple AirPlay®, DTS Play-Fi®

#### Output

Left / Right 5-way binding posts,  
Subwoofer Out via Analog RCA

#### Wireless Connectivity

2.4 GHz and 5.0 GHz; 802.11 g/n

#### Room Correction

ARC™ (Anthem Room Correction) with included calibrated microphone

#### Power Draw

Max: 170 Watts, Idle: 10 Watts, Standby: 6 Watts

#### Weight

3 lbs. (1.4 kg)

#### Size (H x W x D)

3.22" x 7.95" x 8.36" (8.2cm x 20.2cm x 21.2cm)

Specifications are subject to change without notice.



**Endless variety and limitless choices.** Your personal digital audio library, and your favorite online audio services, are available, wirelessly, anywhere in your home, at the touch of a button, at a level of quality that no other streaming loudspeaker system can match.



If you already enjoy a pair of MartinLogan loudspeakers you can use the Forte Wireless Amplifier to power and stream audio directly to them at the same time. Customize and optimize performance instantly with Anthem Room Correction Technology. The Forte Wireless Amplifier also features an Ethernet connection, for whole home networking up to 256 zones! When you experience it, you will agree: high quality, network-adaptable DTS Play-Fi streaming technology is the perfect high performance match for high performance MartinLogan loudspeakers.

Anthem Room Correction (ARC™) Technology is the industry's best user-controlled DSP room tuning innovation. Using advanced DSP software and a calibrated microphone, ARC tunes speaker performance to compensate for your room's unique characteristics, ensuring perfect sound in any listening space.