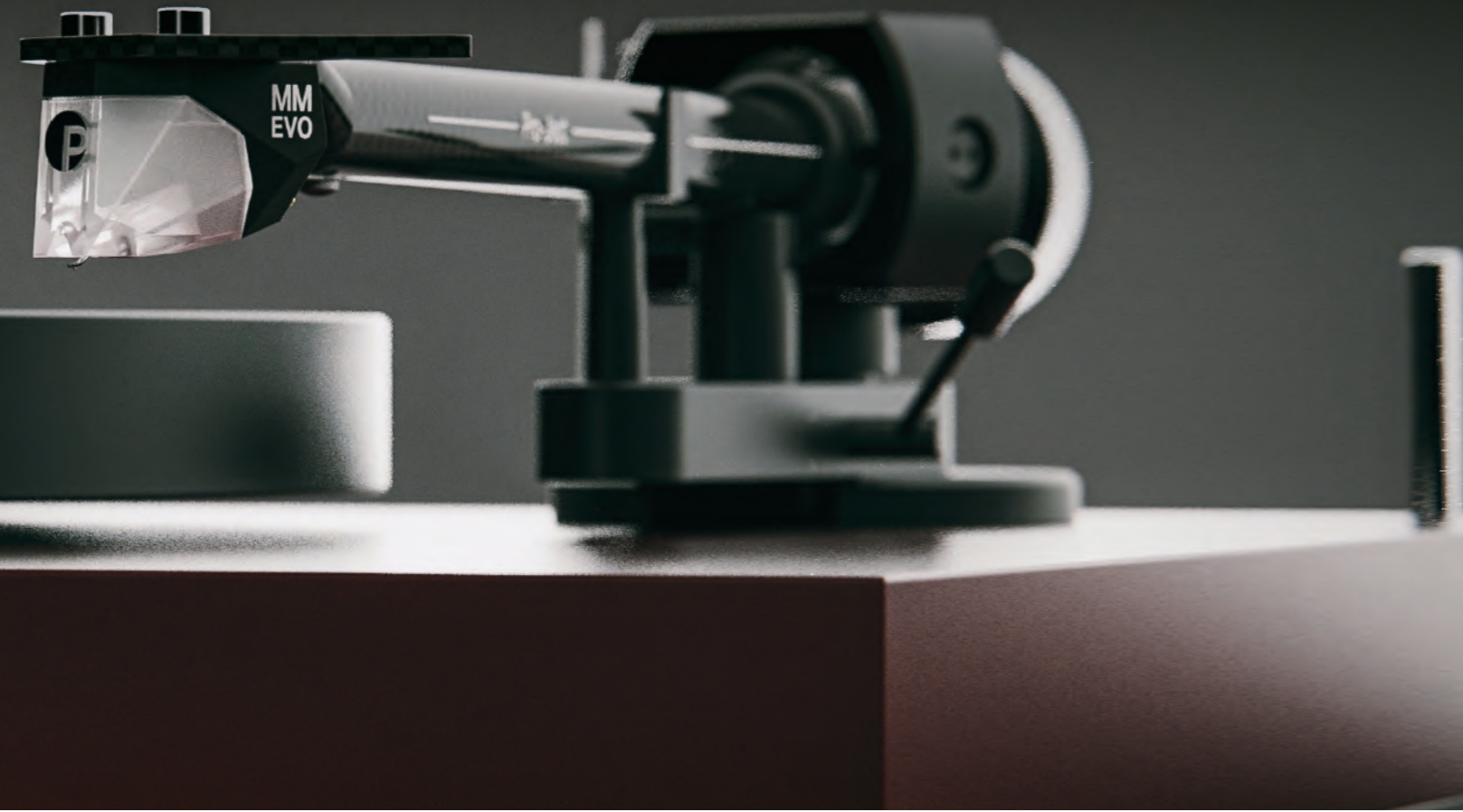


# Debut EVO 2 Setup Guide

## Getting started:

- Make sure to have enough space to unpack your turntable.
- Always unpack and setup in a clean environment.
- Please Do **NOT** throw away the packaging! If you need a service or want to return your product, please send them in the original packaging including all inserts. In case of any damage in another packaging your dealer cannot guarantee a full refund.
- complete manual: [www.project-audio.com/en/product/debut-evo-2](http://www.project-audio.com/en/product/debut-evo-2)



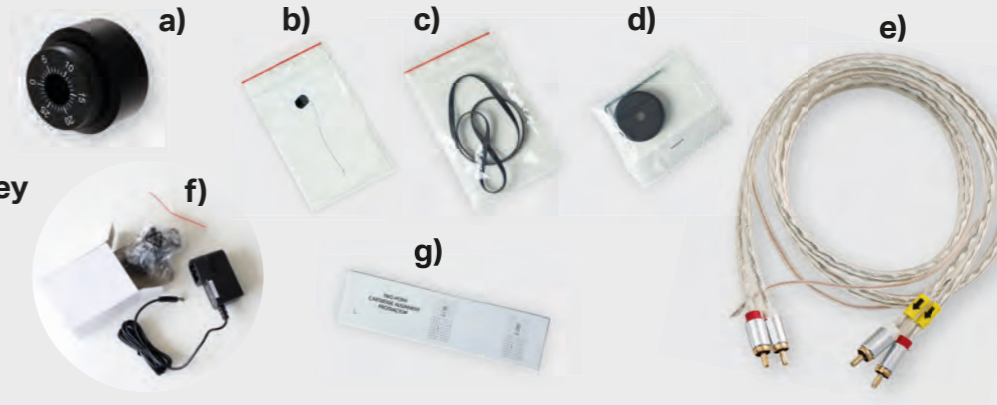
**1** Remove dust cover from the box.

**2** Take the small boxes from the carton.

**3** Unpack all items that are packed in the accessory boxes.



- a) Counterweight
- b) Anti Skating Weight
- c) Drive belt
- d) Adapter for 7" singles & allen key
- e) Connect it E RCA cable
- f) Power supply
- g) Cartridge alignment tool

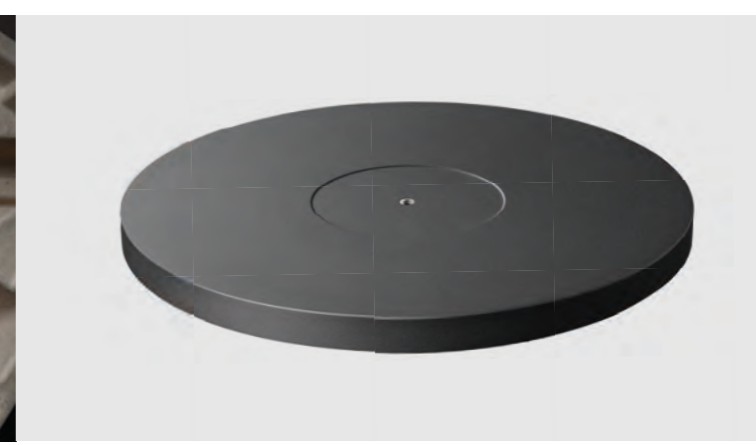


**4** Lift the wrapped turntable out of the box.

**5** Carefully remove the protection covering.

**6** Remove the bottom carton inlay.

**7** Unpack the platter.

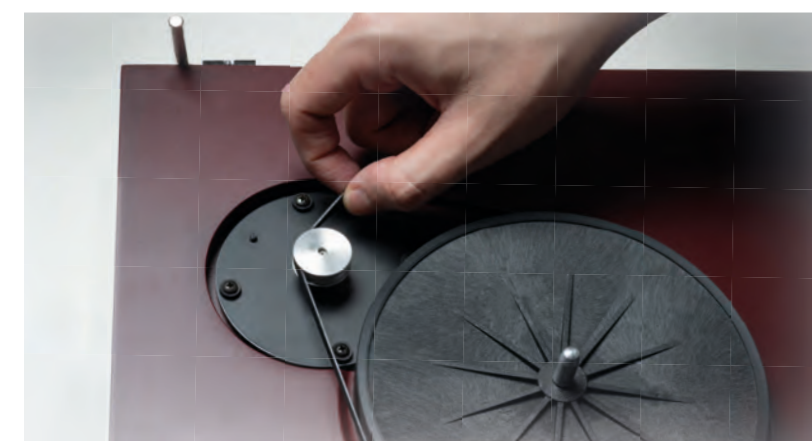


**8** Put the drive belt on the pulley and sub-platter.

**9** Put the platter on the turntable.

**10** Use the rocker switch to select the playback speed.

**11** If necessary, level the turntable by adjusting the feet.



**12** Remove tonearm twist tie.

**13** Put the counterweight in place.

**14** Remove the needle protection cover.

**15** Put a record on the turntable.

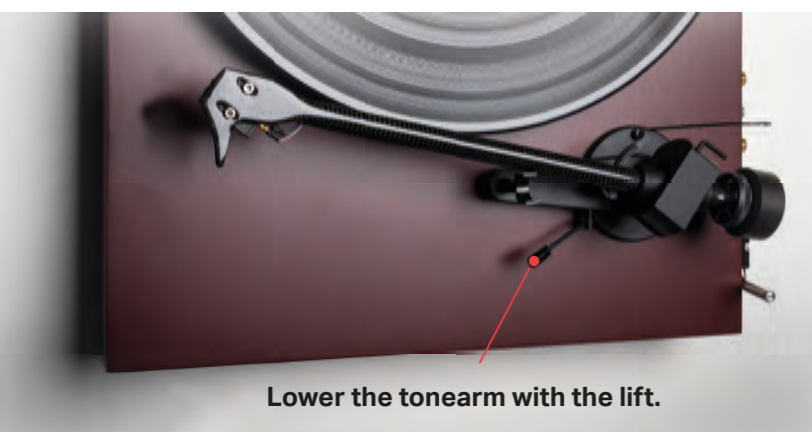


**16** Place the tonearm between platter and armrest.

**17** Balance the tonearm so it stays level by turning the counterweight forwards and backwards on the rod.

**18** Turn the front dial of the counterweight (not the whole weight) so the '0' is in line with marker at the back of the tonearm.

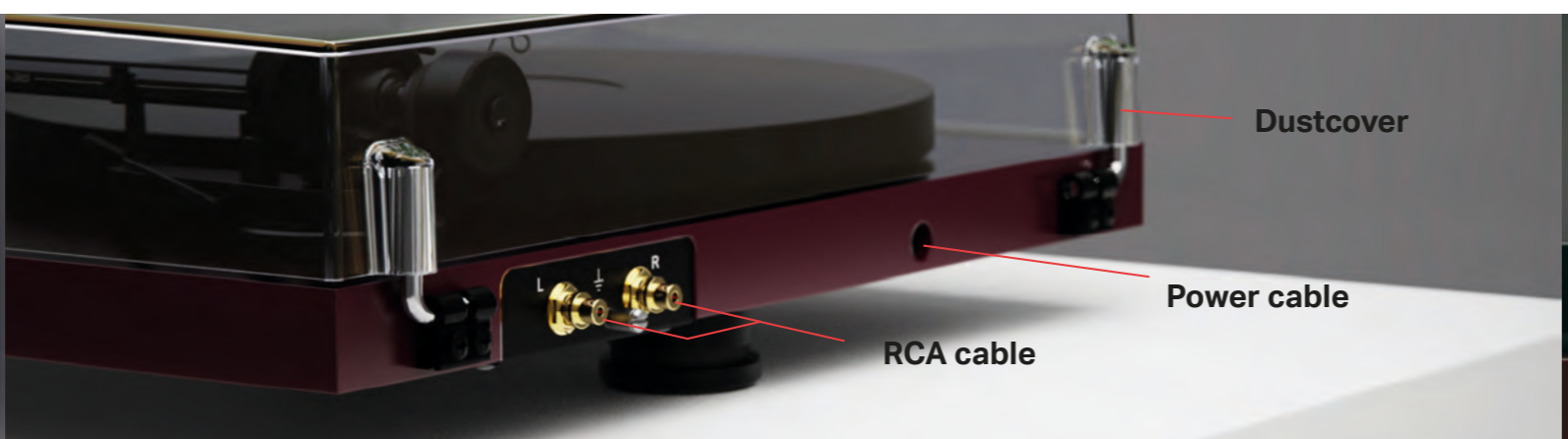
**19** Turn the whole counterweight counter-clockwise until the scale reads 18.



**20** Put the loop of the Anti Skating Weight in the second groove on the tonearm post.

**21** Plug in the RCA and the power cable. Unpack Dust Cover and put it on the turntable.

**22** Connect to your hifi-system & enjoy your music!

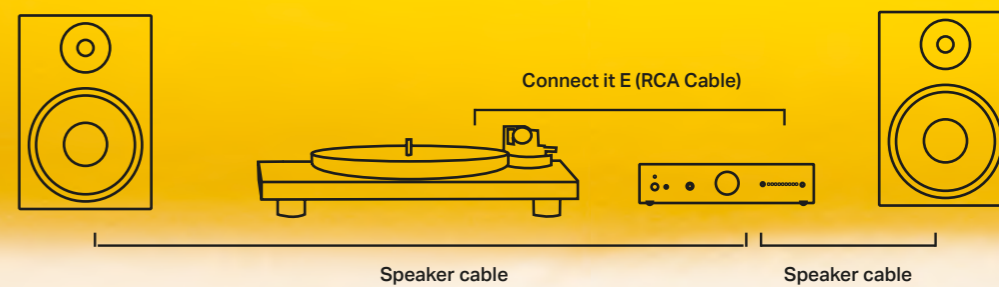


## Need help?

Feel free to contact us. We have experienced partners all over the world. Find your dealer here:  
[www.project-audio.com/en/find-a-dealer/](http://www.project-audio.com/en/find-a-dealer/)

## Possible Setup:

Pro-Ject Speaker Box 5 S2 (bookshelf speaker)  
and Pro-Ject MaiA S3 (stereo integrated amplifier).



### Service

Should you encounter a problem which you are not able to alleviate or identify despite the above information, please contact your dealer for further advice. Only when the problem cannot be resolved there should the unit be sent to the responsible distributor in your country. Warranty repairs will only be affected if the unit is returned correctly packaged. For this reason we recommend keeping the original packaging. Never return a record player without making sure that it is safely disassembled and correctly packaged in the original packaging. Please remove these parts and pack them separately: lid, counterweight, anti-skating weight and belt. Fit the cartridge protection cap and the transport lock for the tonearm tube, prior to carefully packaging the record player.

### Warranty

The manufacturer accepts no responsibility for damage caused by not adhering to these instructions for use and/or by transportation without the original packaging. Modification or change to any part of the product by unauthorized persons, release the manufacturer from any liability over and above the lawful rights of the customer.

### Warranty: Terms and Conditions

- A warranty is valid only for products purchased from an authorized Pro-Ject Audio Systems retailer or dealer.
- This warranty offer is limited to the repair of the equipment (which could be a repair or replacement at our discretion, neither of which affects your original warranty).
- Neither transportation or any other costs, nor any risk for removal, transportation and installation of products is covered by this warranty.
- A warranty is only valid for the original owner. It is not transferable.
- To validate your warranty, you will need to provide the original sales invoice or other proof of ownership and date of purchase.
- Warranty must be claimed within two years of purchase from an authorized dealer. After this period of time, the warranty will expire.
- The legal warranty obligation exists in addition to this warranty and is not limited by this warranty.

A Pro-Ject Audio Systems warranty relates to claims of defects in materials and/or workmanship at the time of purchase. It does not cover:

- Deterioration of component parts, the nature of which is to become worn or depleted with use, such as batteries and headphone ear pads, drive belts and cartridges.

- Damages caused by incorrect installation, connection or packing.
- Damages caused by any use other than the correct use described in the user manual, negligence, modifications, or use of parts that are not made or authorized by Pro-Ject Audio Systems.
- Damages caused by faulty or unsuitable ancillary equipment.
- Damages caused by accidents, lightning, water, fire heat, war, public disturbances or any other cause beyond the reasonable control of Pro-Ject Audio Systems and its appointed distributors.
- Products where the serial number has been altered, deleted, removed or made illegible.
- Repairs or modifications that have been executed by an unauthorized person.

### Commercial Use

Faults caused due to using domestic products in commercial environments or on commercial scales are not covered by warranty. This turntable is intended for domestic use only. Using them for business applications are done so at your own risk.

Pro-Ject Audio Systems is a Registered Trademark of H. Lichtenegger.

This guide was produced by: Pro-Ject Audio Systems  
Copyright © 2024. All rights reserved.

The information was correct at the time of going to press. The manufacturer reserves the right to make changes to the technical specification without prior notice as deemed necessary to uphold the ongoing process of technical development.

Qualcomm aptX is a product of Qualcomm Technologies, Inc. and/or its subsidiaries. Qualcomm is a trademark of Qualcomm Incorporated, registered in the United States and other countries. aptX is a trademark of Qualcomm Technologies International, Ltd., registered in the United States and other countries.



