

ESOTERIC

Super Audio CD/CD Player **K-01XD SE** / **K-03XD SE**



Icon of the Brand

The ultimate in precision engineering, epitomized by the VRDS technology.
Unique discrete circuits that express the richness of musical texture.
A powerful power supply that is the key to dynamic sound reproduction.

With all these features, the K Series is the icon of the Esoteric brand and continues the line of digital disc players that Esoteric has been updating and producing since its inception.

Since its introduction in 2010, the K Series has been acclaimed for its exceptional music reproduction capabilities and has established itself as the reference digital player in the world. Enjoy our signature sound that has captivated music lovers around the world.

SE

Since its inception in 1987, Esoteric has been at the forefront of innovation as a high-end audio brand from Japan, continually pushing the boundaries of high quality sound reproduction. The Esoteric brand is known for its outstanding acoustic engineering that has sustained its reputation and prestige, its massive investment without regard to cost, its “museum quality” craftsmanship, and its beautiful designs worthy of music reproduction.

Esoteric has brought a number of highly original innovations to the world of high-end audio, including the legendary VRDS-ATLAS Super Audio CD transport mechanism, Master Sound Discrete DAC and Master Sound Discrete Clock with proprietary discrete circuits; it is no exaggeration to say that Esoteric’s history is synonymous with digital playback innovation in high-end audio.

Finally, the SE versions of the K-01XD and K-03XD are now available with new discrete clock technology and improved analog circuitry in the DAC. We are proud of our brand and always strive for the best sound.

The SE models we are releasing this time reflect every conceivable technological accumulation from the time the original model was introduced to the present. Enjoy the enhanced presence, dynamics, and beautifully organic and musical textures of the new SE models.



VRDS ATLAS

VRDS (Vibration-Free Rigid Disc-Clamping System) is a core technology of Esoteric's CD/Super Audio CD transport mechanisms that has been a focus of the brand since its inception. The system firmly clamps the disc to a platter of the same diameter, eliminating both the rotational vibration of the disc itself and the effects of any extraneous mechanical vibration. Any latent disc warpage is also corrected by the turntable to significantly improve the relative optical axis accuracy of the optical pickup and the disc pit surface, while also minimizing servo current. This all combines to significantly reduce disc read errors and further enable breathtaking sound quality.



K-01XD SE's ATLAS 01

VRDS-ATLAS

The VRDS mechanism has undergone continuous development and improvement for over 30 years. During its long and illustrious history, one of the most important highlights was the introduction of the VRDS-ATLAS platform, which represents the pinnacle of perfection and sound quality. The K-01XD SE / K-03XD SE are equipped with VRDS-ATLAS mechanisms that have been specially adapted for each model to inherit all the qualities of the VRDS-ATLAS reference mechanism used in our flagship model, the Grandioso K1X SE.

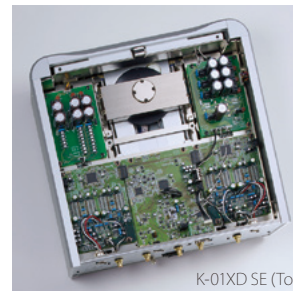
The K-01XD SE's new ATLAS 01 disc transport features a 20mm SS400 steel bridge, identical to that used in our Grandioso models, while the K-03XD SE's ATLAS 03 uses an 18mm SS400 steel bridge. The mechanism features ultra-high rigidity and a heavy-duty design to dampen any vibrations that could affect sound quality. The transport's duralumin platter also has a well-deserved reputation for excellent sound quality, and its solid steel bridge is larger than that of the VRDS-NEO, and it uses a single-point spindle bearing design that minimizes friction and rotational noise through its point-contact thrust bearing system, the same design as the high-end models.

Wide Design with a Low Center of Gravity

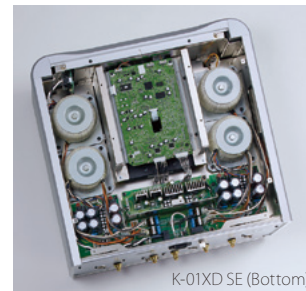
As the quietest and most elegant transport in VRDS history, Esoteric's impressive VRDS-ATLAS epitomizes the company's resolute focus on mechanical grounding technology to more effectively reduce vibration. The adoption of a wide, low-profile design for the entire transport mechanism helped achieve a lower center of gravity, while the relocation of the turntable motor from its previous position above the bridge to below the turntable dramatically shortened the path for grounding vibration and reduced mechanical noise. Tray cavities have also been minimized for increased rigidity, and special vibration-absorbing elastomer stoppers cancel out resonance when the tray is in the closed position.

Large-Scale Power Circuitry, the Key to Sound Quality

The key to the sound quality of the K Series, which boasts a powerful, sculpted, three-dimensional sound, lies in its powerful power supply. In the SE model, the power supply section has also been brushed up, adding even more depth to the tone. The K-01XD SE is equipped with a total of four large toroidal transformers, with the L/R of the D/A converter section, the mechanism, and the digital circuits each powered by its own power transformer. The K-03XD SE has a total of two large toroidal power transformers that supply power to the digital and analog circuits independently.



K-01XD SE (Top)



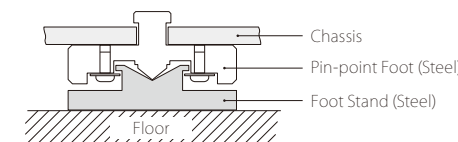
K-01XD SE (Bottom)

Low-Feedback DC Regulator and Super Capacitors

The power supply uses a low-feedback design for a powerful, open sound in a discrete configuration with no integrated circuitry. A total of 1,850,000 μ F (K-01XD SE) / 650,000 μ F (K-03XD SE) super capacitors are installed to improve low-frequency resolution and achieve a remarkable improvement in sound quality.

Chassis Construction and Layout of the Circuit Blocks

The VRDS-ATLAS transport mechanism is centrally located within the chassis. It is mounted on a 5mm thick steel base plate and supported by three proprietary Pinpoint Feet (Patent #4075477 and #3778108). Pinpoint Feet integrate a spike and saucer to provide effective mechanical grounding of vibrations. These feet are not bolted to the baseplate, but are held in place by the weight of the chassis when installed. By avoiding the stress concentration caused by screwing the Pinpoint Foot body into the large surface area of the baseplate, a more open sound is created. The internal structure of the chassis features a double-deck design, with the audio circuit boards on the upper level and the power supply circuits and transformers on the lower level to minimize magnetic flux leakage and vibration, while also shortening the power supply wiring.



Semi-Floating Top Panel

The top panel of the chassis uses a screwless semi-floating structure, which further contributes to an open and dynamic sound.

Master Sound Discrete Clock

for Digital Player



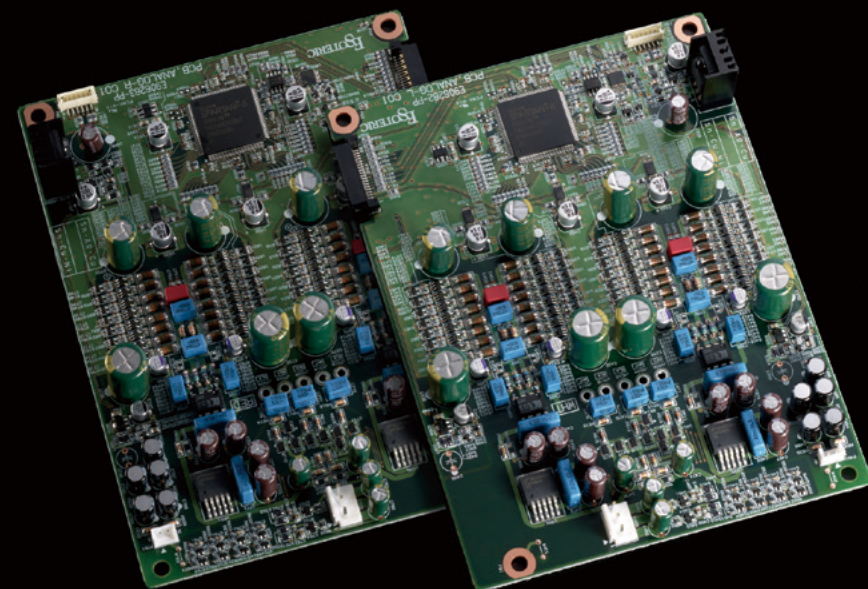
It is no exaggeration to say that the clock circuitry is the biggest key to high sound quality in digital music reproduction. For its flagship master clock generator Grandioso G1X, Esoteric has perfected its own in-house manufactured OCXO clock module, the Master Sound Discrete Clock. The G1X's unique discrete circuitry has been highly acclaimed for its superior musical expressiveness, creating a buzz in the world of high-end audio that has traditionally been described only in terms of technical specifications. The "Master Sound Discrete Clock for Digital Player" used in the new SE model applies the basic design concept of G1X's in-house manufactured OCXO module to the internal clock of the digital player models. The unique circuit design using

carefully selected discrete components, such as a large crystal oscillator, achieves high sound quality that reflects Esoteric's philosophy in every detail, which cannot be achieved with an off-the-shelf clock module. The new SE model can also be connected to the Esoteric G series external master clock generator to improve sound quality by synchronizing the internal SE clock circuitry to an even more accurate 10 MHz clock.

Master Sound Discrete DAC

Bringing out all the dynamics and energy of music

Our goal was to assemble a carefully selected set of rigorously tested discrete components into a complete circuit that could perfectly reproduce all the dynamics and energy of music – something simply unattainable with ordinary integrated chips. Our top engineering teams put their pride on the line to design and produce a quality of sound that can only be found in our Master Sound Discrete DAC – our in-house developed, DAC architecture.



Luxurious Materials for Pure Performance

The Master Sound Discrete DAC was first introduced in the Grandioso D1X as the most innovative DAC in Esoteric's history, and its stunningly realistic sound quality has consistently garnered rave reviews for making listeners feel as if they are actually at a live performance. The version found in the K-01XD SE/K-03XD SE uses a simpler circuit configuration that captures the essence of the K1X SE to take the 01/03 Series to

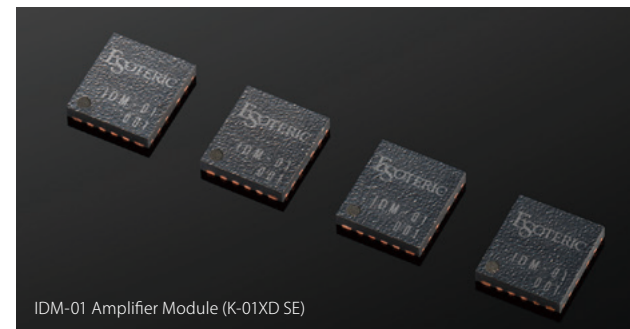
new heights. Consisting of 32 elements per channel, each DAC element contains a clock driver, logic circuit, capacitor, resistor, etc., and all 32 elements are kept isolated from each other to maintain maximum processing precision. In keeping with the D1X SE design philosophy, these DACs are packed with a luxurious selection of state-of-the-art components to ensure the pure, effortless output of boundless musical energy.

Advanced Digital Processing

The proprietary delta-sigma ($\Delta\Sigma$) modulator supports 64-bit/512Fs and the latest high-end digital formats, including 22.5 MHz DSD and 768kHz PCM signals. The FPGA's dedicated digital processing algorithm has been developed exclusively for the Master Sound Discrete DAC and is fully optimized for superior reproduction of both DSD and PCM digital audio data.

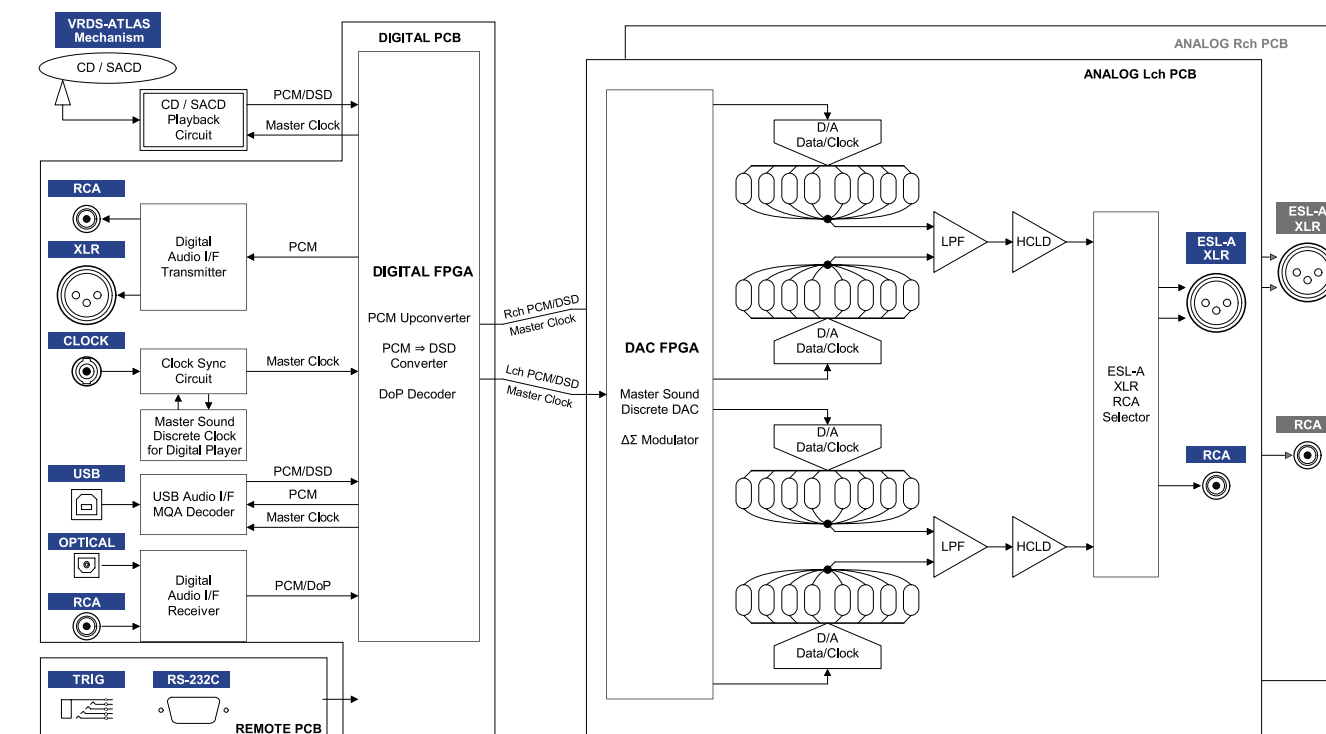
Upgraded with Premium Quality Parts

In the new SE model, the discrete parts of the analog circuitry on the DAC board have been refreshed for even better sound quality. The amplifier module used in the K-01XD SE is our proprietary "IDM-01". The materials, circuit patterns and layout have been carefully studied by Esoteric's engineers as if they were designing an amplifier with a discrete configuration, and the extremely short signal path that takes advantage of integrated circuits amplifies the vibrancy of music in a dynamic and subtle way. In the K-03XD SE, we have also made the switch to a premium grade amplifier module. The IDM-01 and other analog parts, such as analog filter resistors and capacitors, have been carefully selected to achieve a more vivid live sound, improved audible dynamics, and a more organic texture.



Advanced Quality Control

With a discrete DAC, where component tolerances are directly linked to arithmetic precision, advanced quality control is also required for the manufacture of electronic circuit boards. Esoteric's in-house factory incorporates some of the world's leading PCB manufacturing technologies, such as soldering in an oxygen-free oven located in a clean room with the same level of cleanliness as a hospital operating room. Technologies cultivated in the production of electronic circuit boards for the audio, medical, aerospace, and defense industries support the high production quality of the Master Sound Discrete DAC.



Unique Esoteric-HCLD* Output Buffer Circuit with Enhanced Current Transmission

The Esoteric HCLD Output Buffer Amplifier features an astonishingly fast slew rate of 2,000V/μs. Current transfer and speed-the most important factors for an analog output circuit-have been pushed to the limit to reproduce the reality of music with a truly breathtaking dynamics.

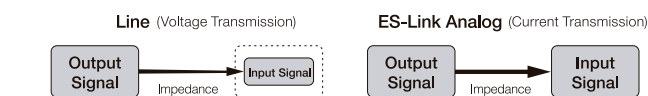
※ HCLD : High Current Line Driver

ES-Link Analog –

Esoteric's Proprietary Current Transmission

In addition to line connections (XLR, RCA), ES-Link Analog, Esoteric's proprietary current transmission system, is employed for connection to an amplifier. ES-Link Analog is the ideal method for audio signal transmission. Compared to the conventional voltage transmission, it transmits approximately 100 times more current, making it less susceptible to noise and sending the full energy of the music to the amplifier.

Also, it is not affected by the impedance of the interconnects running between the source device and amplifier, so it maintains a perfect integrity between the output signal of the source and the input signal to the amplifier.



External Input, D/D Conversion & USB Input

In addition to the coaxial and optical inputs, the model also features a USB type-B port that is compatible with 22.5MHz DSD asynchronous signal transmission, allowing it to be used as a stand-alone D/A converter. Functions for upsampling a digital PCM signal to 2/4/8/16 × (max. 768kHz) and converting PCM to DSD are provided.





K-01XD SE

Super Audio CD/CD Player



K-03XD SE

Super Audio CD/CD Player



Rear panel
(common)



Double-face Reote control RC-1333 included
(common)

Playable Disc Types	Super Audio CD, CD (including CD-R/CD-RW)
Analog Audio Outputs:	XLR/ES-LINK Analog ×1, RCA ×1
Digital Audio Outputs:	XLR ×1, RCA ×1
Digital Audio Inputs:	RCA ×1, Optical ×1, USB B ×1
Clock Input:	BNC ×1 (10MHz, Sine wave 0.5 to 1.0Vrms)
External Control Inputs:	RS-232C ×1, 3.5mm Monaural mini ×1 (DC 12V, 55mA)
Frequency Response*:	5Hz to 30kHz (−3dB)
S/N Ratio*:	113dB (A-weight)
Total Harmonic Distortion*:	0.0007% (1kHz)

* Source: Super Audio CD, 0dB, DSD=F2, XLR output

Power Supply:	120V AC 60Hz, 220-240V AC 50/60Hz, 220V AC 60Hz, 230V AC 50Hz
Power Consumption:	26W (K-01XD SE), 25W (K-03XD SE)
Overall Dimensions (W×H×D):	445 × 162 × 438mm (including protrusions)
Weight:	31kg (K-01XD SE), 28kg (K-03XD SE)

- This product is available in two different power supply variations as shown in the chart above. Make sure that the voltage shown on the rear panel matches the AC line voltage in your area.
- The shape of the AC inlet and plug of the supplied power cord depends on the voltage rating and destination country.

©2024 TEAC Corporation. All Rights Reserved. All text, images, graphics and other materials on this brochure are subject to the copyright and other intellectual property rights of TEAC Corporation. These materials shall not directly or indirectly be published, reproduced, modified or distributed in any medium. Esoteric, Grandioso, and VRDS are trademarks of TEAC Corporation, registered in the U.S. and other countries. Master Sound Discrete DAC is a registered trademark of TEAC Corporation. "DSD" is a registered trademark. All other brand or product names are trademarks or registered trademarks of their respective holders.

TEAC CORPORATION

1-47, Ochiai, Tama-shi, Tokyo Japan 206-8530

Esoteric Brand Website ▶
<https://www.esoteric.jp/en>



Key Features (New features of the SE model are shown with SE icon.)

K-01XD SE

- "VRDS-ATLAS (ATLAS 01)" Super Audio CD transport mechanism with 20 mm turntable bridge
- "Master Sound Discrete DAC" – In-house developed DAC with unique FPGA, 64bit/512Fs Delta-Sigma modulator, selected parts
- Up-graded DAC board with specially selected premium grade parts including IDM-01 SE
- Four independent toroidal power supply transformers (incl. two for left and right DACs)
- 71 × EDLC* super capacitors (total capacitance: 1,850,000μF=1.85F)

K-03XD SE

- "VRDS-ATLAS (ATLAS 03)" Super Audio CD transport mechanism with 18 mm turntable bridge
- "Master Sound Discrete DAC" – In-house developed DAC with unique FPGA, 64bit/512Fs Delta-Sigma modulator
- Up-graded DAC board with premium grade parts SE
- Two independent toroidal power supply transformers (for digital and analog circuits)
- 26 × EDLC* super capacitors (total capacitance: 650,000 μF=0.65F)

Common Features

- Super high slew-rate, "Esoteric-HCLD" high current line driver (2,000V/μs)
- "ES-Link Analog" current signal transmission output
- "Master Sound Discrete Clock for Digital Player" – in-house developed discrete clock module SE
- Clock sync function
- Low-feedback discrete DC regulators
- Up-sampling function (x2/x4/x8/x16, max. 768kHz), PCM to DSD (22.5MHz) convert function
- USB Type-B port supporting 22.5MHz DSD and asynchronous transmission
- RC-1333 double-face remote controller that can also control Esoteric amplifiers.

* EDLC(Electric Double-Layer Capacitor): A special capacitor with tremendous large capacitance compared to conventional electrolytic capacitors for audio equipment. A special capacitor that boasts an astonishingly large capacitance compared to ordinary audio electrolytic capacitors.

Authorized Dealer